

BIOS SETUP UTILITY

Main **Advanced** Security Boot Exit

Advanced Settings

- ▶ Boot Feature
- ▶ Processor & Clock Options
- ▶ Advanced Chipset Control
- ▶ SATA/Floppy Configuration
- ▶ PCI/PnP Configuration
- ▶ SuperIO Device Configuration
- ▶ Remote Access Configuration
- ▶ Hardware Health Configuration
- ▶ ACPI Configuration
- ▶ Trusted Computing
- ▶ IPMI Configuration
- ▶ Event Log Configuration

IPMI configuration including server monitoring and event log.

↑↓↔:Move
 Enter:Select
 +/-/:Value
 F10:Save
 ESC:Exit
 F1:General Help
 F8:Fail-Safe Defaults
 F9:Optimized Defaults

v02.67 (C) Copyright 1985-2009, American Megatrends, Inc.

BIOS SETUP UTILITY

Advanced

Advanced - IPMI Configuration

IPMI Firmware Revision 2.04
 Status Of BMC Working
 ▶ View BMC System Event Log
 Clear BMC System Event Log
 ▶ Set LAN Configuration
 BMC Watch Dog Timer Action [Disabled]

InPut for Set LAN Configuration command. See IPMI 1.5 Spec, table 19.1

NOTE:-
 Each question in this group may take considerable amount of time.

↑↓↔:Move
 Enter:Select
 +/-/:Value
 F10:Save
 ESC:Exit
 F1:General Help
 F8:Fail-Safe Defaults
 F9:Optimized Defaults

v02.67 (C) Copyright 1985-2009, American Megatrends, Inc.

BIOS SETUP UTILITY

Advanced

Advanced - IPMI Configuration - Set LAN Configurati

Channel Number [01]
Channel Number Status:Channel number is OK
IP Address Source [Static]
IP Address [192.168.101.033]
Subnet Mask [255.255.255.000]
Gateway Address [192.168.101.003]
MAC Address [00.25.90.3D.81.FA]

Options

Static
DHCP

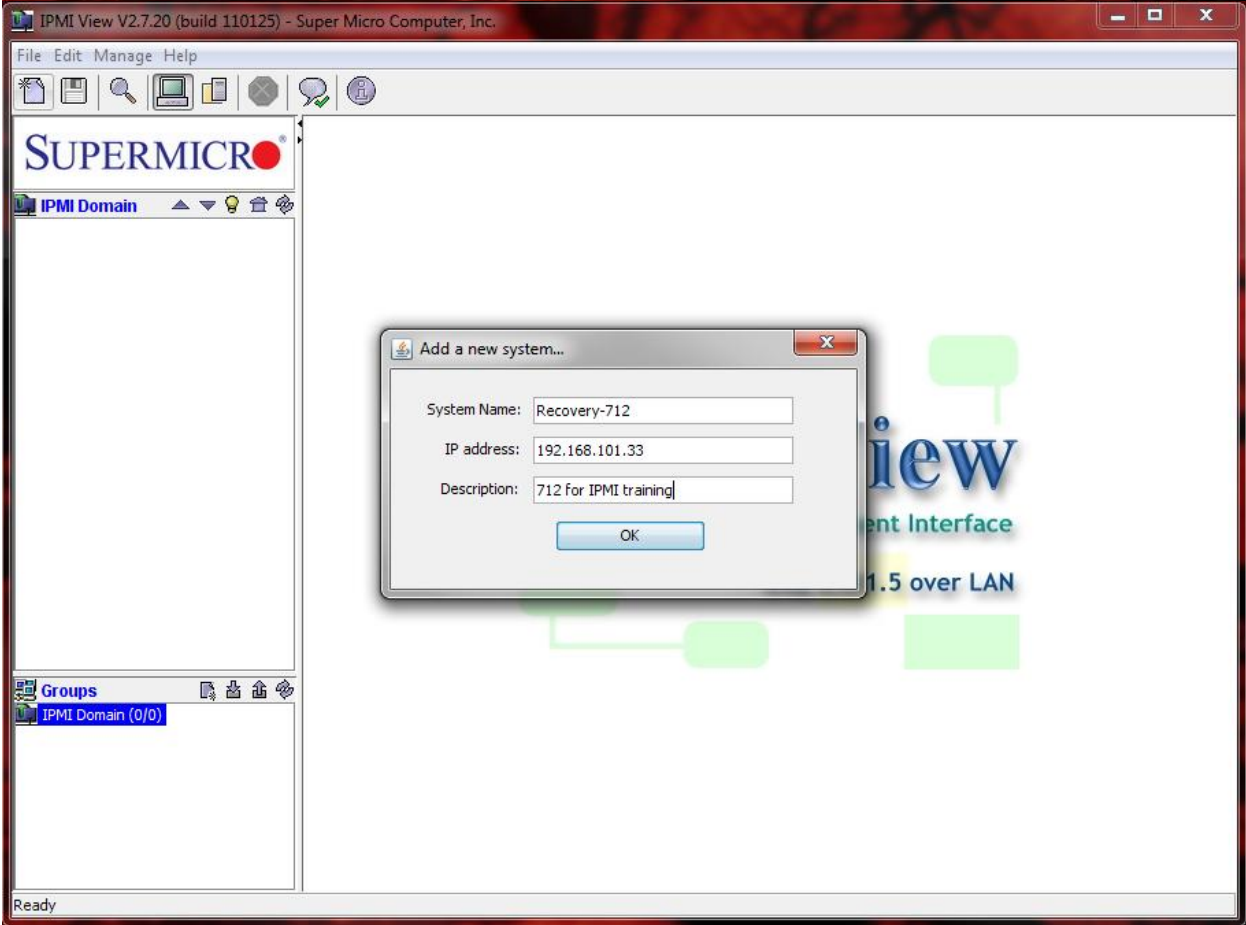
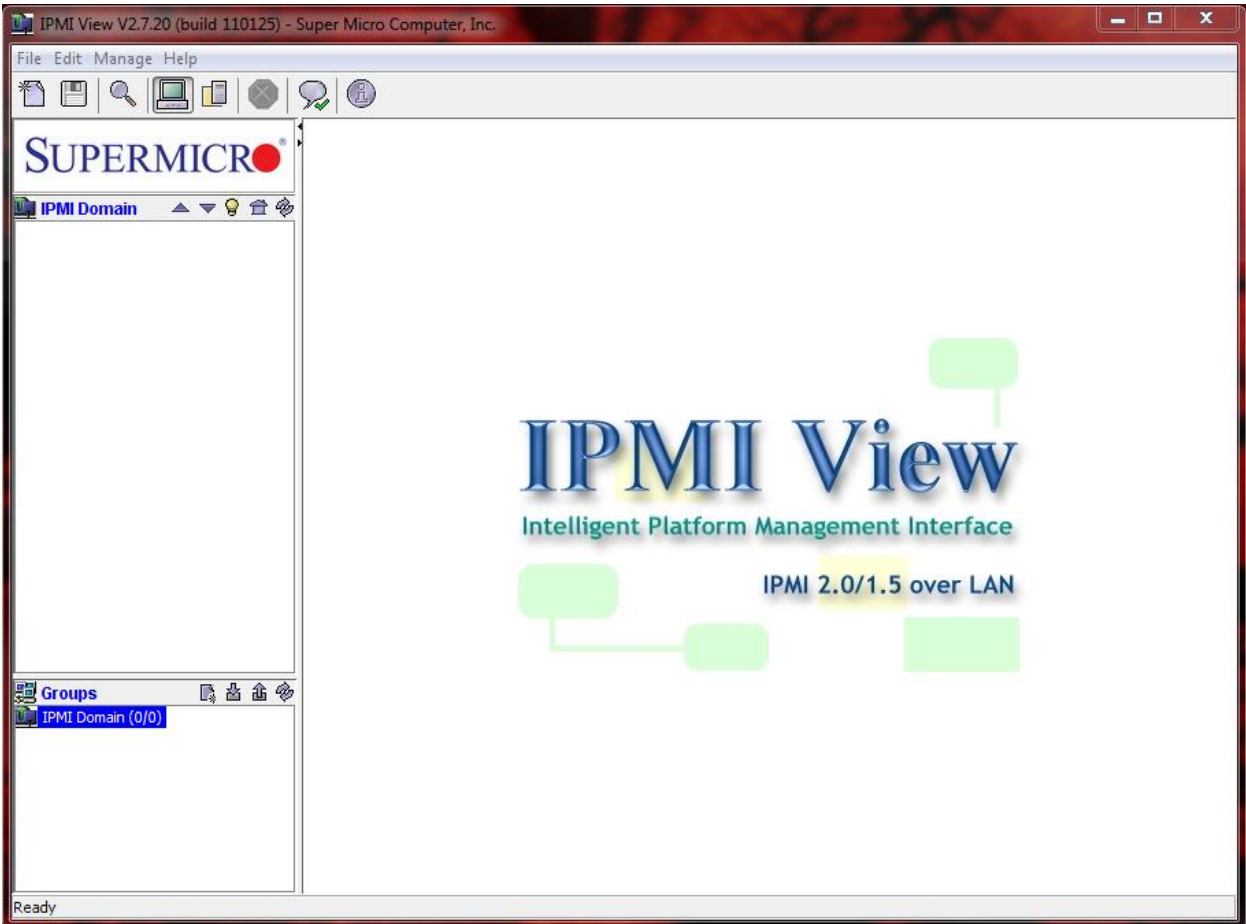
↑↓↔:Move
Enter:Select
+/-/:Value
F10:Save
ESC:Exit
F1:General Help
F8:Fail-Safe Defaults
F9:Optimized Defaults

v02.67 (C) Copyright 1985-2009, American Megatrends, Inc.

Download the following utility to login and view the IPMI interface.

ftp://ftp.unitrends.com/support/utilities/IPMIView20-Win32_v2.7.20_Build110125.exe

The default login username and password are both -> ADMIN





SUPERMICRO

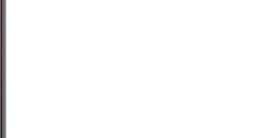
IPMI Domain

Recovery-712



Groups

IPMI Domain (1/1)



System Name **Recovery-712**

IP Address **192.168.101.33**

Description **712 for IPMI training**

Login ID

Password

save ID and Password

CONNECTED

Version : IPMI 2.0 RMCP+
Cipher Suite : RAKP-HMAC-SHA1, HMAC-SHA1-96, AES-CBC-128

[Login](#) [Event Log](#) [Sensors](#) [IPM Device](#) [BMC Setting](#) [Users](#) [Text Console](#) [KVM Console](#)

RMCP+ Open Session successful

IPMI View V2.7.20 (build 110125) - Super Micro Computer, Inc.

File Edit Session Manage Help

SUPERMICR

IPMI Domain

Recovery-712

System Event Log

Export Entries

All

From 1 To 1

Get Export

SEL Version: 1.5
 Total Entries: 1
 Free Space: 10220 bytes
 Recent Entry Added: 03/30/2011 17:53:30 Wed
 Recent Entry Erased: 03/30/2011 14:40:14 Wed

| Ev... | Type | Timestamp | Sensor Type | Sensor | Event Type |
|-------|--------------|-------------------------|---------------------------------------|---------------|----------------------|
| 1 | System Event | 03/30/2011 17:53:30 Wed | Physical Security (Chassis Intrusion) | Chassis Intru | De-assertion: Physic |

Clear All Entries

Current SEL Device Timestamp: 04/01/2011 17:35:37 Fri

Set Timestamp

Refresh

Login Event Log Sensors IPM Device BMC Setting Users Text Console KVM Console

Get SEL Entry successful

IPMI View V2.7.20 (build 110125) - Super Micro Computer, Inc.

File Edit Session Manage Help

SUPERMICR

IPMI Domain

Recovery-712

Fans

Voltages

Temperatures

Sensors

Refresh every 60 seconds Refresh Now Save Layout Hide inactive item Show History

Login Event Log Sensors IPM Device BMC Setting Users Text Console KVM Console

Layout Configuration saved


IPMI View V2.7.20 (build 110125) - Super Micro Computer, Inc.

File Edit Session Manage Help

SUPERMICRO

Recovery-712

Device Information

Firmware Revision 02.04 ACPI System Power State S0/G0  On

IPMI Revision 2.0

Graceful Power Control

Graceful Shutdown

Chassis Power Control

Power Down **Power Up** **Power Cycle** **Reset**

BMC UID LED

Cold Reset **Blink UID LED**

Refresh

Login Event Log Sensors IPM Device **BMC Setting** Users Text Console KVM Console

power-cycle command was sent

IPMI View V2.7.20 (build 110125) - Super Micro Computer, Inc.

File Edit Session Manage Help

SUPERMICRO

Recovery-712

BMC LAN Configuration

IP Address LAN MAC **Update**

Gateway IP DHCP

Subnet Mask LAN MAC must be correct while update

VLAN Tag Enable VLAN tagging

SNMP

Community **Update**

SNMP Trap Receivers

| IP Address |
|----------------|
| 192.168.51.210 |
| 0.0.0.0 |
| 0.0.0.0 |
| 0.0.0.0 |

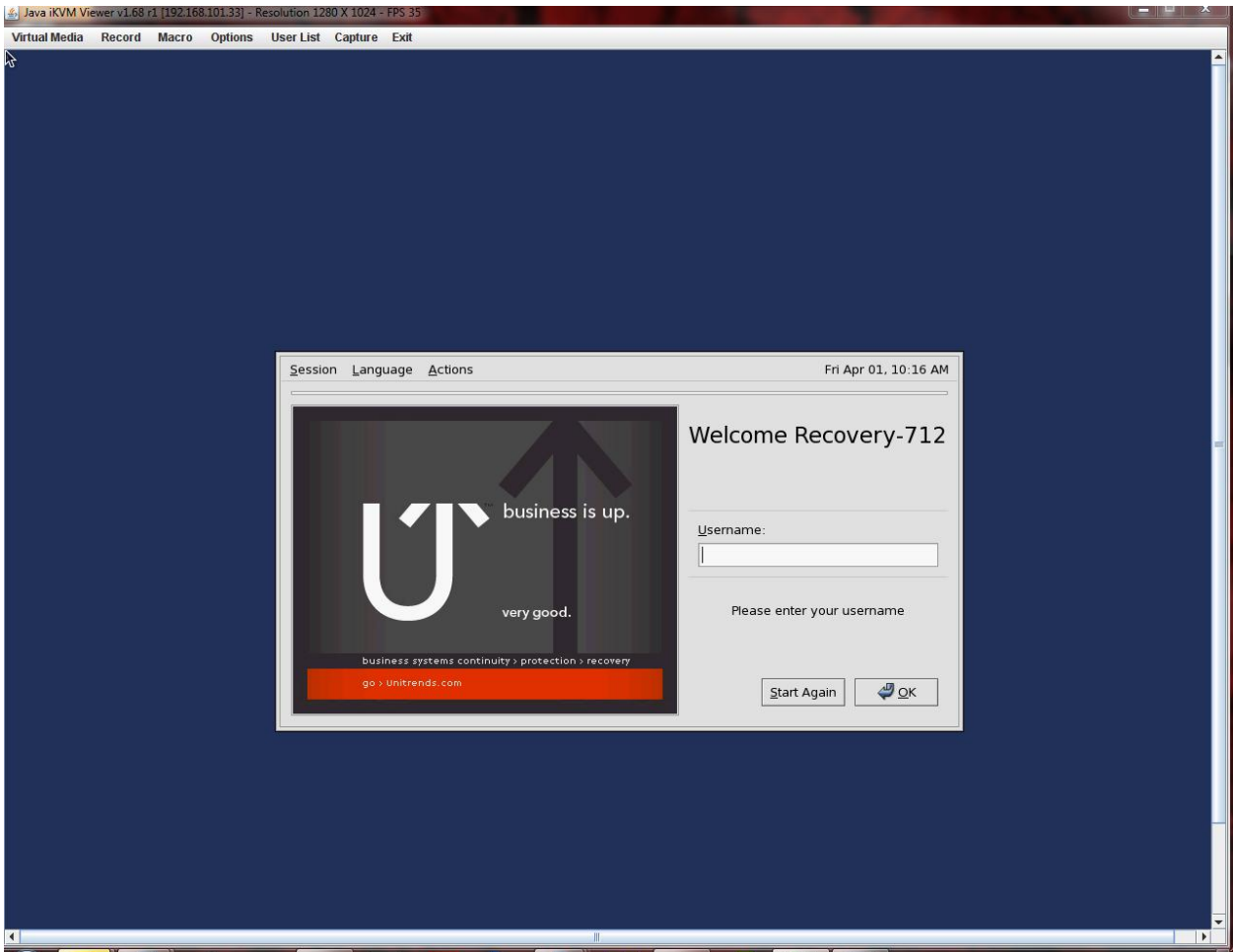
LAN Interface

Dedicated On Board LAN1 Failover **Update**

Refresh

Login Event Log Sensors IPM Device **BMC Setting** Users Text Console KVM Console

Get ACPI Power State succeeded



For better mouse accuracy:

IPMI > KVM Console > Launch KVM Console > Options > Preferences > Input > Relative Mouse (Linux)

