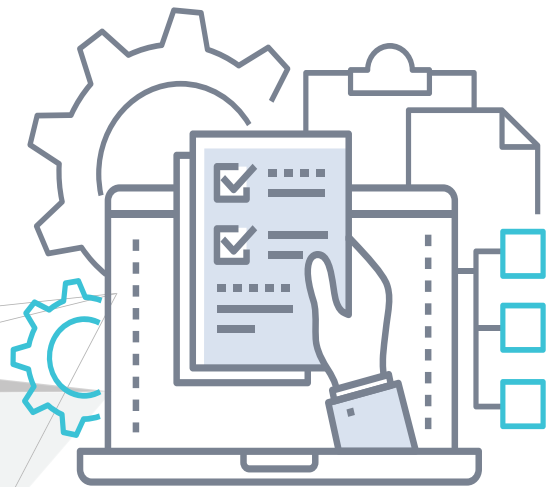


Site Preparation Guide for Gen 9 MAXS Appliances

10.5.1 | Document version 1.03242021



Copyright

Copyright © 2021 Unitrends Incorporated. All rights reserved.

Content in this publication is copyright material and may not be copied or duplicated in any form without prior written permission from Unitrends, Inc (“Unitrends”). This information is subject to change without notice and does not represent a commitment on the part of Unitrends.

The software described in this publication is furnished under a license agreement or nondisclosure agreement. The software may be used or copied only in accordance with the terms of the license agreement. See the End User License Agreement before using the software.

The software described contains certain open source components that are copyrighted. For open source licenses, see the Unitrends Open Source Compliance section of the product Administrator Guide.

Because of the nature of this material, numerous hardware and software products are mentioned by name. In most, if not all, cases these product names are claimed as trademarks by the companies that manufacture the products. It is not our intent to claim these names or trademarks as our own.

The following applies to U.S. Government End Users: The Software and Documentation are “Commercial Items,” as that term is defined at 48 C.F.R.2.101, consisting of “Commercial Computer Software” and “Commercial Computer Software Documentation,” as such terms are used in 48 C.F.R.12.212 or 48 C.F.R.227.7202, as applicable. Consistent with 48 C.F.R.12.212 or 48 C.F.R.227.7202 1 through 227.7202 4, as applicable, the Commercial Computer Software and Commercial Computer Software Documentation are being licensed to U.S. Government end users (a) only as Commercial Items and (b) with only those rights as are granted to all other end users pursuant to the terms and conditions herein. Unpublished rights reserved under the copyright laws of the United States. Unitrends agrees to comply with all applicable equal opportunity laws including, if appropriate, the provisions of Executive Order 11246, as amended, Section 402 of the Vietnam Era Veterans Readjustment Assistance Act of 1974 (38 USC 4212), and Section 503 of the Rehabilitation Act of 1973, as amended, and the regulations at 41 CFR Parts 60 1 through 60 60, 60 250, and 60 741. The affirmative action clause and regulations contained in the preceding sentence shall be incorporated by reference.

The following applies to all contracts and subcontracts governed by the Rights in Technical Data and Computer Software Clause of the United States Department of Defense Federal Acquisition Regulations Supplement:

RESTRICTED RIGHTS LEGEND: USE, DUPLICATION OR DISCLOSURE BY THE UNITED STATES GOVERNMENT IS SUBJECT TO RESTRICTIONS AS SET FORTH IN SUBDIVISION (C)(1)(II) OF THE RIGHTS AND TECHNICAL DATA AND COMPUTER SOFTWARE CLAUSE AT DFAR 252 227 7013. UNITRENDS CORPORATION IS THE CONTRACTOR AND IS LOCATED AT 200 WHEELER ROAD, NORTH TOWER, 2ND FLOOR, BURLINGTON, MASSACHUSETTS 01803.

Unitrends, Inc
200 Wheeler Road
North Tower, 2nd Floor
Burlington, MA 01803, USA
Phone: 1.866.359.5411

Contents

Site Preparation Guide for Gen 9 MAXS Appliances	5
Space and Clearance Requirements	5
Load Bearing (Weight) Requirements	6
Power Requirements	6
Cooling and Environmental Conditions	7
Configuration Requirements	7
Configuring the System	8

This page is intentionally left blank.



Site Preparation Guide for Gen 9 MAXS Appliances

This document describes the preparations that should be considered before installing a Gen 9 MAXS appliance. Proper preparation of the site will help ensure consistent and stable operation of the Unitrends solution.

The Gen 9 MAXS appliance line includes these models:

- MAX9S-232
- MAX9S-264
- MAX9S-432
- MAX9S-464
- MAX9S-832
- MAX9S-864

Consider these site preparation requirements before installation:

- ["Space and Clearance Requirements"](#)
- ["Load Bearing \(Weight\) Requirements" on page 6](#)
- ["Power Requirements" on page 6](#)
- ["Cooling and Environmental Conditions" on page 7](#)
- ["Configuration Requirements" on page 7](#)

Space and Clearance Requirements

The following space requirements should be considered before installing the Unitrends hardware:

- The appliance rack-mounted chassis fits into a standard 19" rack or cabinet and is up to 22.58" deep. Rack-mounted chassis are 1-unit (1U) in height and come with rails for racking. Attach the rails to accommodate the specific rack or cabinet used with the appliance.
- Unitrends recommends the use of cable guides to organize the power, network, and other cables.
- Each appliance requires proper airflow to cool the system's components. At least 12" of space should be maintained behind the rack at all times to ensure adequate ventilation.
- The rack or cabinet should be positioned so that there is adequate space in front of and behind the rack/cabinet to allow the front and rear doors (if applicable) to open. Allow 25" clearance for front doors and 30" for rear doors.

Rail kit description

Your Gen 9 MAXS comes with ReadyRails static rails for 2/4-post racks (rail kit ID A8). Rail specifications are given in the following table:

Rack Types Supported	Rail Adjustability Ranges (mm)	Rail Depth (mm)
<ul style="list-style-type: none"> • Square • Round • Threaded² • Flush² • Center¹ 	<ul style="list-style-type: none"> • Square: 608 min to 879 max • Round: 594 min to 872 max • Threaded: 618 min to 898 max 	622 ³ without CMA/SRB
<p>Note¹: Mounting screws not included Note²: Mounting screws not included, minor conversion required Note³: Rail depth represents cabinet assembly only and does not represent inner rail component that attaches to chassis</p>		

Load Bearing (Weight) Requirements

To prevent tipping, make certain that the rack is secure before installing the chassis. Unitrends strongly recommends the use of two people when placing the rack-mounted chassis into the rack or cabinet.

The following table provides load bearing requirements for Gen 9 MAXS appliances:

Note: If the appliance protrudes the rack about 1/2" to 1", the front rail may need adjusting. The front rail must be properly aligned (fourth hole from the front) to ensure a secure fit.

Dimensions (W x D x H)	Appliance Weight	Shipping Weight
17.08" x 22.58" x 1.68"	29.98 lbs	43 lbs
434.00mm x 595.63mm x 42.8mm	13.6 kg	19.50 kg

Power Requirements

The specifications listed in this section assume that appliances are fully configured. There should be sufficient power capacity to service each appliance.

The proper power protection must be provided for each on-site appliance. Uninterruptible power supplies (UPS) must be adequately sized to support the appliance. Additionally, UPS must supply enough current to the appliance while it is charging.

The following table provides power requirements for Gen 9 MAXS appliances:

Appliances

10.5.1 | March 2021

Power Supply	Input Voltage Range (Auto Sensing)	Input Freq Range	Input Current Range	BTUs/hr
Single Hot Plug (1+0), 550W	100 – 240VAC	50 – 60HZ	7.4 – 3.7A	2107

Cooling and Environmental Conditions

Unitrends appliances have been designed to operate within the environmental conditions listed below. Conditions that exceed recommended temperatures may result in severe damage caused by heat buildup. Proper air circulation will help prevent hot spots and ensure optimal performance. Unitrends recommends the use of a temperature alarm system for appliances that operate in an unattended environment.

Note: Installing the appliance in direct sunlight may cause it to overheat.

The Unitrends environmental specifications for rack-mounted appliances include:

Chassis Specs for Rack-mounted Models	Description
Non-operating environment	<ul style="list-style-type: none"> -40° C to 65° C (-40° F to 149° F) 5% to 95% Relative Humidity with 33° C (91° F) Maximum Dew Point
Operating environment	<ul style="list-style-type: none"> 10° C to 35° C (50° F to 95° F) 10% to 80% Relative Humidity with 29° C (84.2° F) Maximum Dew Point
Cooling clearance	12" clearance recommended for ventilation

Configuration Requirements

- IT Personnel Considerations** – An administrator with network and client system access is expected to be available to assist with the implementation. This person will be responsible for installing and configuring agent software and will help with the planning and implementation of the overall Unitrends data protection solution. Additionally, someone responsible for administering and managing the appliances should be available during the installation process.
- Network Considerations** – Ethernet network configurations must be capable of supporting the added demands of a Unitrends appliance. Ethernet switch ports must be available prior to installation.
- On-premise to Off-premise Connections** – If hot backup copy will be implemented, adequate bandwidth for transferring data between the on-premise system and the off-premise system is critical. Generally, a T1 line can transfer between 400MB to 500MB of data per hour without secure shell compression. OpenVPN is recommended

for connection between the two systems. Additionally, firewall access (if applicable) must be granted in order to allow the two appliances to communicate on designated ports.

Configuring the System

Configure the system as described in the *Quick Start Guide for Recovery Series and MAXS Appliances*, available at <https://www.unitrends.com/docs/user-guides/quick-start-guide>.