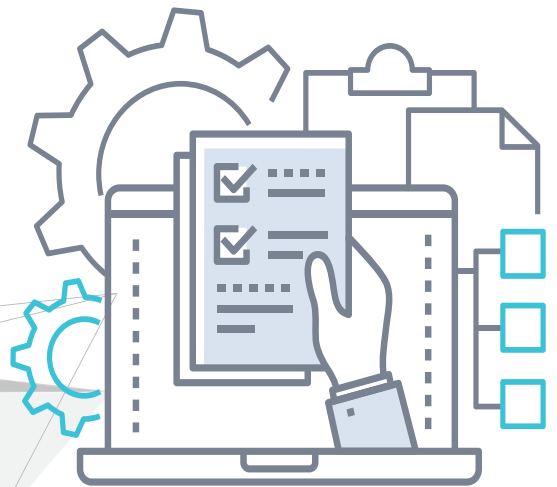


# Deployment Guide for Unitrends Backup on Nutanix AHV

Release 10.8 | Document Date 08202024



# Copyright

Copyright © 2024 Unitrends Incorporated. All rights reserved.

Content in this publication is copyright material and may not be copied or duplicated in any form without prior written permission from Unitrends, Inc (“Unitrends”). This information is subject to change without notice and does not represent a commitment on the part of Unitrends.

The software described in this publication is furnished under a license agreement or nondisclosure agreement. The software may be used or copied only in accordance with the terms of the license agreement. See the End User License Agreement before using the software.

The software described contains certain open source components that are copyrighted. For open source licenses, see the Unitrends Open Source Compliance section of the product Administrator Guide.

Because of the nature of this material, numerous hardware and software products are mentioned by name. In most, if not all, cases these product names are claimed as trademarks by the companies that manufacture the products. It is not our intent to claim these names or trademarks as our own.

The following applies to U.S. Government End Users: The Software and Documentation are “Commercial Items,” as that term is defined at 48 C.F.R.2.101, consisting of “Commercial Computer Software” and “Commercial Computer Software Documentation,” as such terms are used in 48 C.F.R.12.212 or 48 C.F.R.227.7202, as applicable. Consistent with 48 C.F.R.12.212 or 48 C.F.R.227.7202-1 through 227.7202-4, as applicable, the Commercial Computer Software and Commercial Computer Software Documentation are being licensed to U.S. Government end users (a) only as Commercial Items and (b) with only those rights as are granted to all other end users pursuant to the terms and conditions herein. Unpublished-rights reserved under the copyright laws of the United States. Unitrends agrees to comply with all applicable equal opportunity laws including, if appropriate, the provisions of Executive Order 11246, as amended, Section 402 of the Vietnam Era Veterans Readjustment Assistance Act of 1974 (38 USC 4212), and Section 503 of the Rehabilitation Act of 1973, as amended, and the regulations at 41 CFR Parts 60-1 through 60-60, 60-250, and 60-741. The affirmative action clause and regulations contained in the preceding sentence shall be incorporated by reference.

The following applies to all contracts and subcontracts governed by the Rights in Technical Data and Computer Software Clause of the United States Department of Defense Federal Acquisition Regulations Supplement:

RESTRICTED RIGHTS LEGEND: USE, DUPLICATION OR DISCLOSURE BY THE UNITED STATES GOVERNMENT IS SUBJECT TO RESTRICTIONS AS SET FORTH IN SUBDIVISION (C)(1)(II) OF THE RIGHTS AND TECHNICAL DATA AND COMPUTER SOFTWARE CLAUSE AT DFAR 252-227-7013. UNITRENDS CORPORATION IS THE CONTRACTOR AND IS LOCATED AT 200 WHEELER ROAD, NORTH TOWER, 2ND FLOOR, BURLINGTON, MASSACHUSETTS 01803.

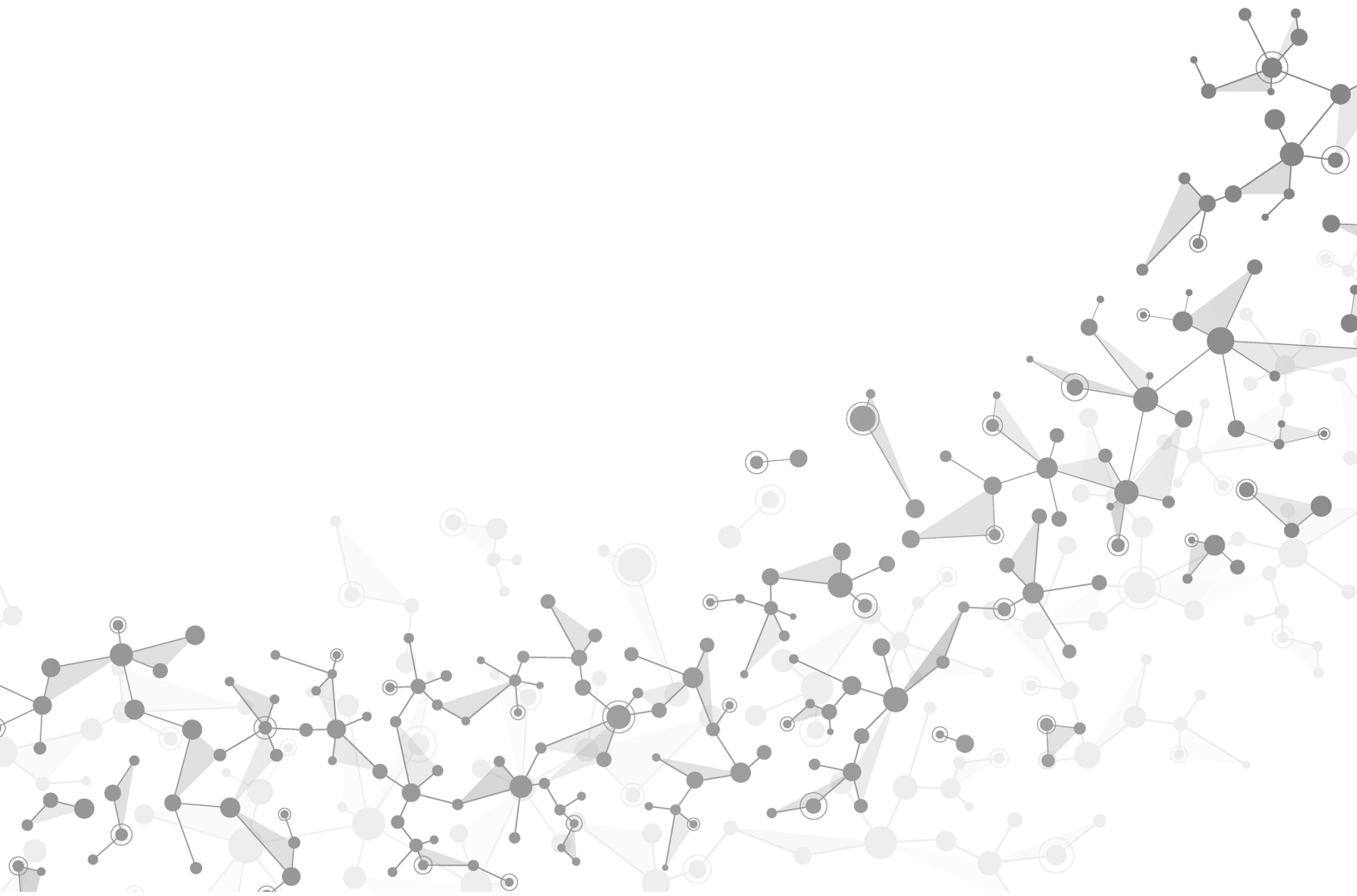
Unitrends, Inc  
200 Wheeler Road  
North Tower, 2nd Floor  
Burlington, MA 01803, USA  
Phone: 1.866.359.5411

# Contents

---

<b>Chapter 1: Introduction</b> .....	<b>5</b>
<b>Chapter 2: Requirements and Considerations</b> .....	<b>7</b>
Hypervisor requirements and considerations .....	7
Virtual machine requirements .....	8
Network requirements .....	9
Port requirements .....	10
Web access .....	11
<b>Chapter 3: Deploying a Unitrends Backup Appliance</b> .....	<b>13</b>
Step 1: Set up storage on the hypervisor .....	13
Step 2: Download the Unitrends Backup image .....	13
Step 3: Deploy the Unitrends Backup VM .....	14
Step 4: Add a virtual disk to use as the initial backup storage .....	19
Step 5: Set up the appliance using the Quick Setup Wizard .....	31
Step 6: (Optional) Modify deduplication settings .....	35
Step 7: Register and license the Unitrends Backup appliance .....	36
Step 8: Start protecting your environment .....	40

*This page is intentionally left blank.*



# Chapter 1: Introduction

Thank you for choosing the Unitrends Backup virtual appliance. You are minutes away from protecting your environment.

With Unitrends Backup deployments, the appliance's initial disk stores no unique data or backups. Storing this data on different disks or external storage arrays enables you to reattach the storage to a different Unitrends Backup appliance, so you can retain your original appliance's settings and backup data if you need to deploy a new Unitrends Backup appliance.

An initial disk of approximately 100GB is used to deploy the Unitrends Backup VM. You must also add a minimum of 200GB as the initial backup storage. You cannot complete deployment without adding the initial backup storage because this storage contains the appliance's unique data and is used to store backups.

This deployment guide includes instructions for deploying using new storage and for deploying using storage that contains backup data from another virtual appliance. The process is similar for both deployment types, and the applicable sections cover any variations.

**Note:** Attaching backup storage that contains backups from another Unitrends Backup appliance is supported only if the original appliance is running the same operating system as the newly deployed appliance. Appliances deployed with version 10.3.6 or higher run CentOS 7. Appliances deployed with older versions run CentOS 6.

Deployment consists of creating the Unitrends Backup virtual machine (VM), attaching backup storage, and configuring appliance settings. These and other terms used in this guide are defined in the following table:

Term	Definition
Added disk	vDisk virtual disk storage created by deploying the Unitrends Backup image, or by using the AHV host. Also called <i>attached disk storage</i> .
Appliance	The Unitrends Backup system that backs up and recovers data. Consists of the Unitrends Backup VM, Unitrends software, attached storage, and additional configuration settings.
Host	Nutanix AHV host cluster that houses the Unitrends Backup VM. Also called a <i>hypervisor</i> .
Initial backup storage	Storage you attach to the Unitrends Backup VM that is used to store appliance configuration settings and backups. You attach this storage after deploying the Unitrends Backup VM, but before you configure the appliance using the Quick Setup Wizard. The initial backup storage must be at least 200GB in size.
Initial disk	100GB disk used to create the Unitrends Backup VM. While deploying the Unitrends image, you select a container on the AHV host that the installer uses to create this disk.
Image file	Unitrends image file used to deploy the Unitrends Backup VM on your AHV host.

Term	Definition
Quick Setup Wizard	The Quick Setup Wizard automatically launches the first time you access the appliance UI from a web browser. Work your way through this wizard to configure additional appliance settings, such as date and time, hostname, and email.
Unitrends Backup VM	Virtual machine created by deploying the Unitrends Backup image file.

# Chapter 2: Requirements and Considerations

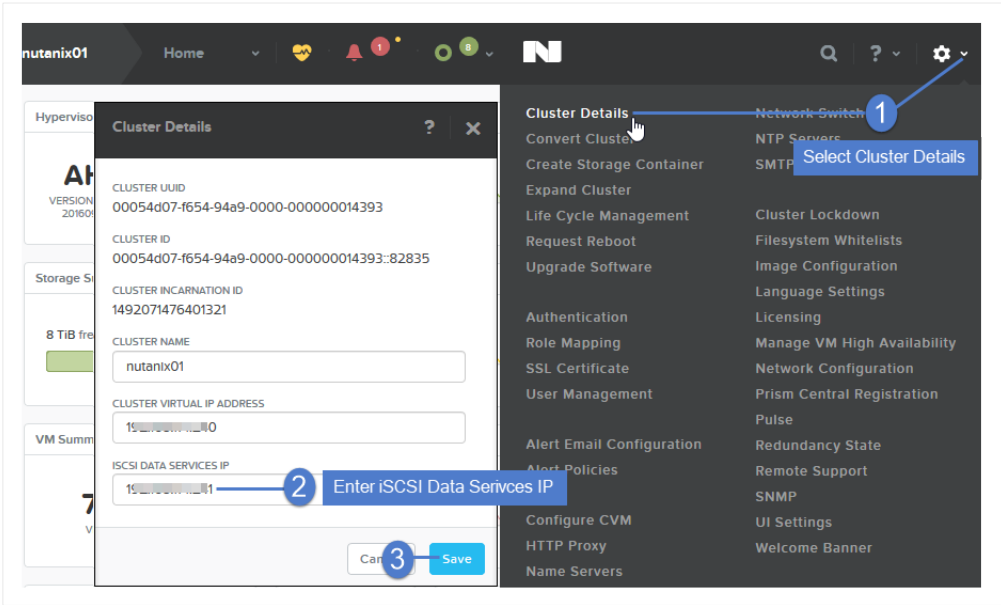
Before deploying your Unitrends Backup appliance, verify the following requirements have been met:

- ["Hypervisor requirements and considerations"](#)
- ["Virtual machine requirements" on page 8](#)
- ["Network requirements" on page 9](#)
- ["Port requirements" on page 10](#)
- ["Web access" on page 11](#)

## Hypervisor requirements and considerations

The following requirements and considerations apply to the Nutanix AHV host cluster:

Item	Description
Nutanix AHV host cluster version	The AHV host must be running Acropolis Operating System (AOS) version 5.1.4 or a higher supported version listed in the <a href="#">Unitrends Compatibility and Interoperability Matrix</a> .
AHV host for protected VMs	Unitrends recommends running your appliance and the VMs it protects on different hosts to avoid losing your VMs and their backups if one of the hosts fails.

Item	Description
iSCSI target access	<p>To protect AHV virtual machines by using host-level backups, backup and recovery jobs access the AHV host over the iSCSI protocol. Ensure the following:</p> <ul style="list-style-type: none"> <li>The Unitrends appliance is able to connect to the iSCSI targets on the Nutanix storage LAN.</li> <li>iSCSI Data Services are configured for the Nutanix AHV cluster. To configure this setting: <ol style="list-style-type: none"> <li>In the Nutanix Prism interface, select <b>Cluster Details</b> from the Options menu.</li> <li>Enter the iSCSI Data Services IP address.</li> <li>Click <b>Save</b>.</li> </ol> </li> </ul> 

## Virtual machine requirements

Before deploying, verify that the Nutanix AHV host cluster has sufficient resources to create the Unitrends Backup VM. If minimum required resources are not available, deployment may fail.

The following resources are required to deploy the Unitrends Backup VM:

**Note:** These are the minimum resources required to deploy and begin using the Unitrends Backup appliance. As you add jobs and storage, be sure to monitor the system and add resources as needed over the lifetime of the appliance.

- A minimum of two virtual processors (VCPUs).
- A minimum of 8GB of RAM.



- 100GB of space for the VM's initial disk.
- At least 200GB of backup storage.

## Network requirements

There are several addresses you should permit for all deployments. All of these ports are outgoing connections from the Unitrends appliance. We do not require incoming NAT of ports or exposing the unit to a public IP, only outgoing communication from a local source Unitrends appliance is needed.

**IMPORTANT!** Never expose the appliance Web UI or SSH connections to open external ports. Doing so may void your support agreement until the appliance can be secured properly. Never deploy the Unitrends appliance on a public IP. All incoming ports to a Unitrends appliance must be firewall protected. Privately operated hot backup copy targets should be deployed in such a way as to secure the VPN connection to only trusted source external IPs.

Network requirements vary by whether DHCP is available in your environment.

### DHCP is available

If DHCP is available in your environment, review these requirements and considerations before you deploy the appliance VM:

- If your environment goes offline for an extended period of time, your appliance may be assigned a new IP address from the DHCP server. This may cause a temporary loss of backup and recovery functionality. If this occurs, see [How to resolve recovery issues related to appliance IP address changes](#) for instructions on how to proceed.
- The eno1 adapter is, by default, configured for DHCP.
- DHCP cannot be configured for more than one network adapter at any given time.
- A network adapter configured for DHCP cannot be managed via the appliance user interface (UI) unless you intend to assign it a static IP address.
- Unitrends appliances intended for use as backup copy targets must be assigned static IP addresses.

### DHCP is not available

If DHCP is not available in your environment, or if you intend to use this appliance as a backup copy target, you must configure a static IP address for the appliance. Initially, the Unitrends Backup VM is created with the IP address 10.10.10.1 and the subnet mask 255.255.255.0. If this IP is currently being used in your environment, disable it until you bring the Unitrends Backup VM online and assign it a new IP address. During deployment, you must configure the following settings:

- An IP address and subnet. The IP address and the subnet enable communication between the appliance and other machines on your network.
- A gateway. A gateway enables communication between the appliance and machines on different subnets.
- Appliance DNS settings, required for the following:
  - To connect the appliance to the Internet.

- To add assets using only their hostnames (rather than by fully qualified domain names).
- To update your appliance from the user interface (UI).
- To access the Unitrends Community forums from the UI.

**Note:** You can obtain the above information from your network administrator.

## Port requirements

Additional ports must be open for connectivity to the Internet and for connectivity to any hot backup copy target. See the following for details:

**Note:** Unitrends does not officially support backup through firewalls. For details, see this KB article: [Backup fails through Router, DMZ, or Firewall](#).

- "Connectivity between the appliance and the Internet"
- "Connectivity between the appliance and a hot backup copy target"

### Connectivity between the appliance and the Internet

Task	Port, Protocol, and Rule	Destination	Notes
Backup and backup copy operations	443/HTTPS Outbound from the Unitrends appliance	kaseyagroup-appliance-registry.jfrog.io	A secure docker container registry required to update backup and backup copy components.
Product Updates	443/HTTPS Outbound from the Unitrends appliance  22/SFTP Outbound from the Unitrends appliance	repo.unitrends.com  sftp.unitrends.com	repo.unitrends.com is used by the Unitrends appliance to perform software updates.  sftp.unitrends.com is used to collect files related to active support tickets.
Remote Support	443/HTTPS Outbound from the Unitrends appliance	support-itivity.unitrends.com	Used for opening a remote tunnel to the Unitrends support team.
Proactive Monitoring	161/UDP Outbound from the Unitrends	notifications.unitrends.com	Used for SNMP trap collection for all proactive monitoring.

Task	Port, Protocol, and Rule	Destination	Notes
	appliance 161/TCP Outbound from the Unitrends appliance 162/UDP Outbound from the Unitrends appliance 162/TCP Outbound from the Unitrends appliance		

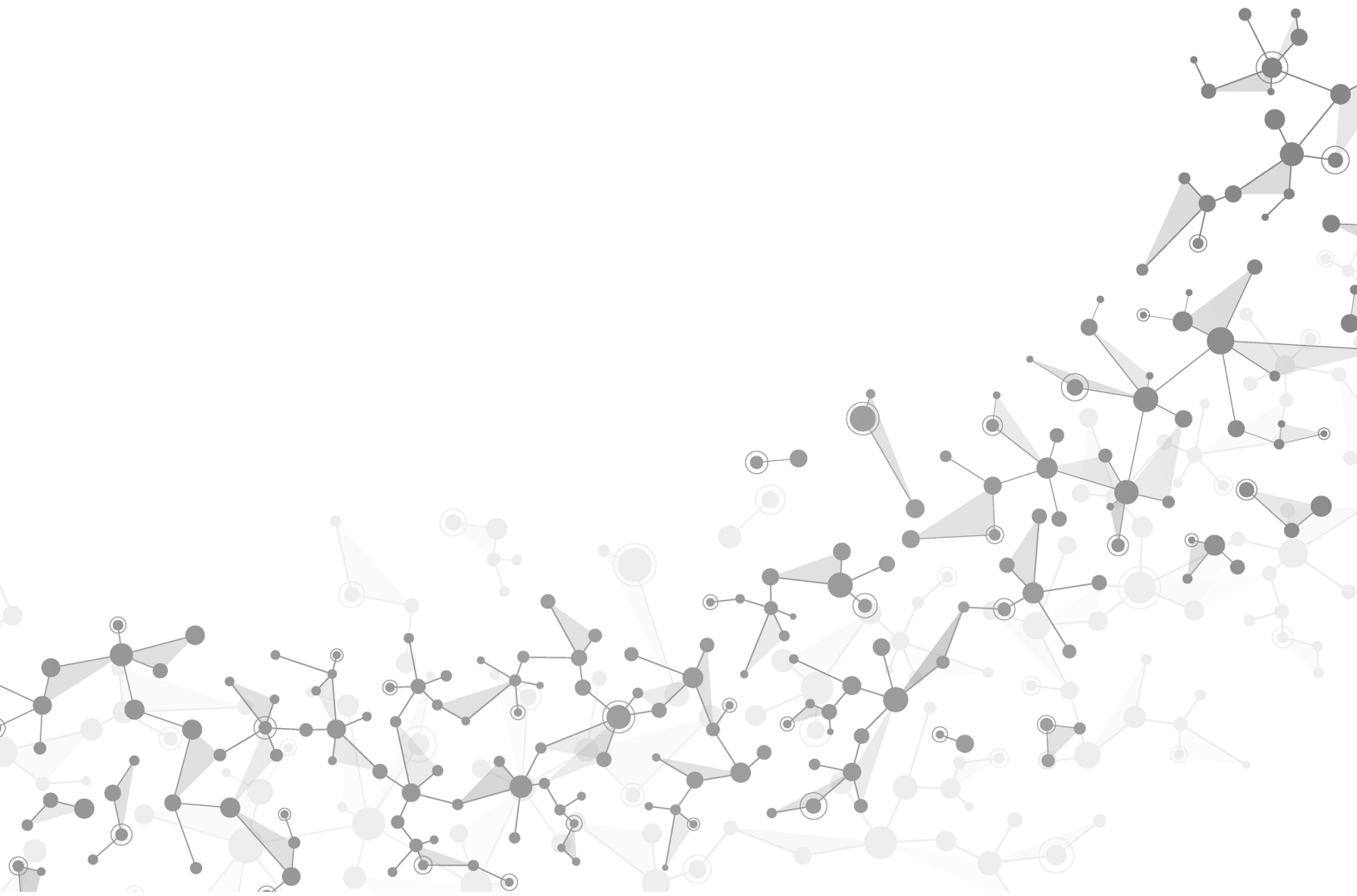
### Connectivity between the appliance and a hot backup copy target

Task	Port, Protocol, and Rule	Destination	Notes
Backup copy to the Unitrends Cloud or your Unitrends target appliance.	The OpenVPN port provided by Unitrends <b>Or</b> The port number you have configured for the secure tunnel connection to the backup copy target appliance must be open Outbound for the TCP and UDP protocols. Port 443 must also be open Outbond for the UCP protocol.	For Unitrends Cloud, the public-facing IP address provided by Unitrends.  Target appliance hostname and IP	Used for copying data to the Unitrends Cloud or your Unitrends target appliance.

## Web access

Once you have configured network settings, you can access the appliance UI by entering its IP address in a Firefox or Chrome browser. (Internet Explorer is not supported.)

*This page is intentionally left blank.*



# Chapter 3: Deploying a Unitrends Backup Appliance

Deployment consists of creating the Unitrends Backup VM, attaching backup storage, and configuring appliance settings.

To create the Unitrends Backup VM, you deploy the Unitrends image file. During deployment, you define network and storage settings for the appliance.

The following steps summarize the procedures used to deploy your Unitrends Backup appliance. Detailed instructions for each procedure follow:

- "Step 1: Set up storage on the hypervisor"
- "Step 2: Download the Unitrends Backup image"
- "Step 3: Deploy the Unitrends Backup VM" on page 14
- "Step 4: Add a virtual disk to use as the initial backup storage" on page 19
- "Step 5: Set up the appliance using the Quick Setup Wizard" on page 31
- "Step 6: (Optional) Modify deduplication settings" on page 35
- "Step 7: Register and license the Unitrends Backup appliance" on page 36
- "Step 8: Start protecting your environment" on page 40

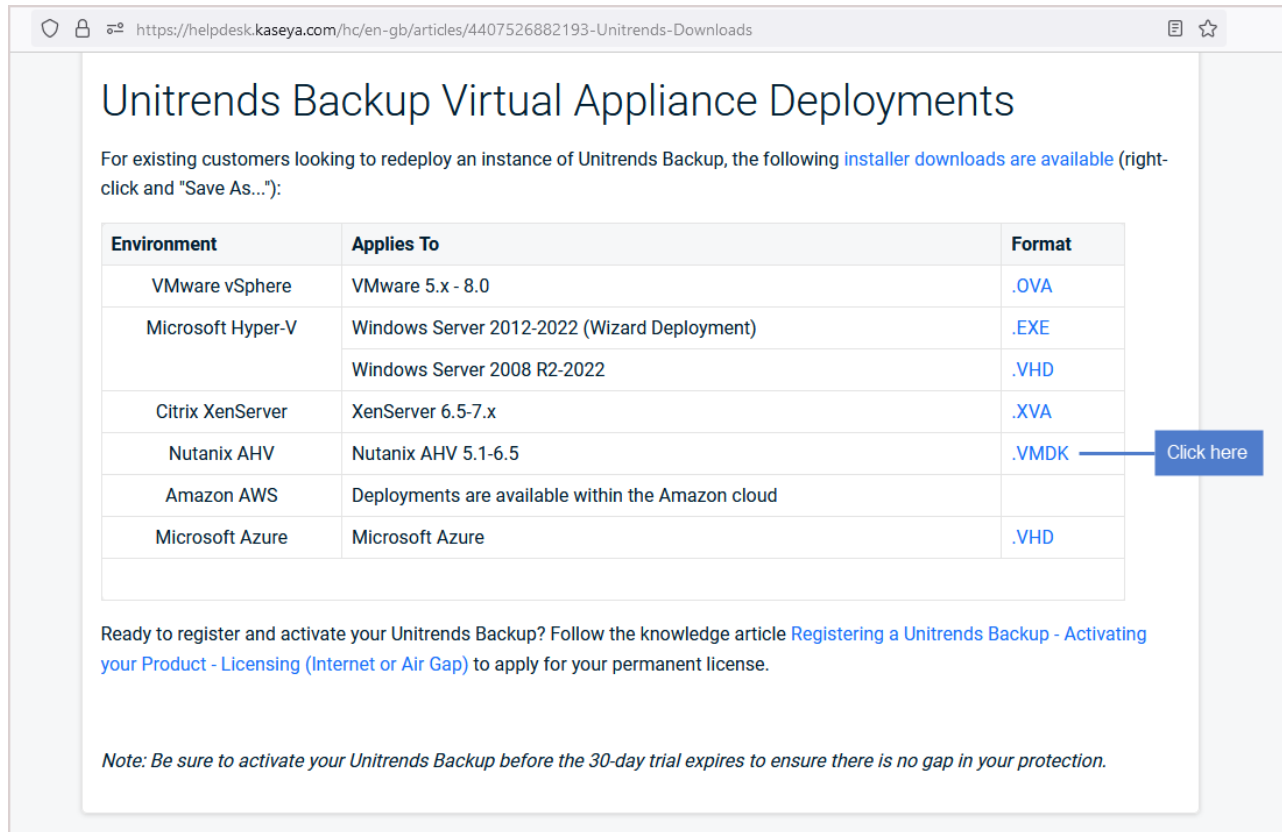
## Step 1: Set up storage on the hypervisor

Verify that the hypervisor has enough storage available. If necessary, add storage. Minimum requirements are:

- 100GB for the Unitrends Backup VM's initial disk.
- At least 200GB for the initial backup storage.

## Step 2: Download the Unitrends Backup image

- 1 Go to <https://helpdesk.kaseya.com/hc/en-gb/articles/4407526882193-Unitrends-Downloads>.
- 2 Scroll down to Unitrends Backup Virtual Appliance Deployments.
- 3 Click the **.VMDK** link in the Nutanix AHV row.



Unitrends Backup Virtual Appliance Deployments

For existing customers looking to redeploy an instance of Unitrends Backup, the following [installer downloads](#) are available (right-click and "Save As..."):

Environment	Applies To	Format
VMware vSphere	VMware 5.x - 8.0	<a href="#">.OVA</a>
Microsoft Hyper-V	Windows Server 2012-2022 (Wizard Deployment)	<a href="#">.EXE</a>
	Windows Server 2008 R2-2022	<a href="#">.VHD</a>
Citrix XenServer	XenServer 6.5-7.x	<a href="#">.XVA</a>
Nutanix AHV	Nutanix AHV 5.1-6.5	<a href="#">.VMDK</a> <span style="border: 1px solid blue; padding: 2px;">Click here</span>
Amazon AWS	Deployments are available within the Amazon cloud	
Microsoft Azure	Microsoft Azure	<a href="#">.VHD</a>

Ready to register and activate your Unitrends Backup? Follow the knowledge article [Registering a Unitrends Backup - Activating your Product - Licensing \(Internet or Air Gap\)](#) to apply for your permanent license.

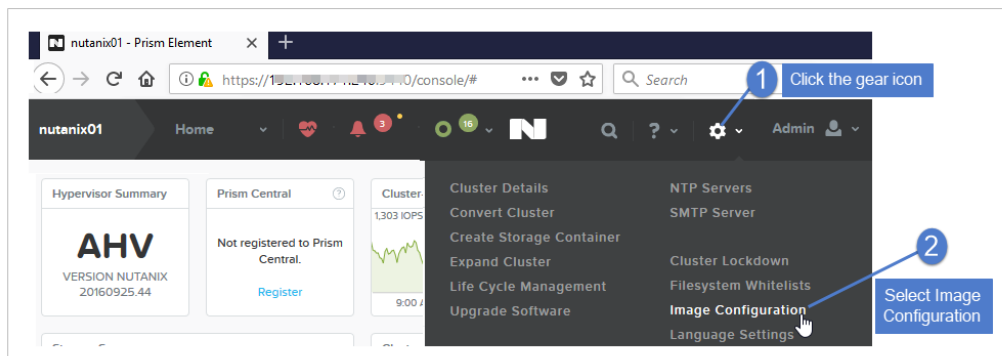
*Note: Be sure to activate your Unitrends Backup before the 30-day trial expires to ensure there is no gap in your protection.*

## Step 3: Deploy the Unitrends Backup VM

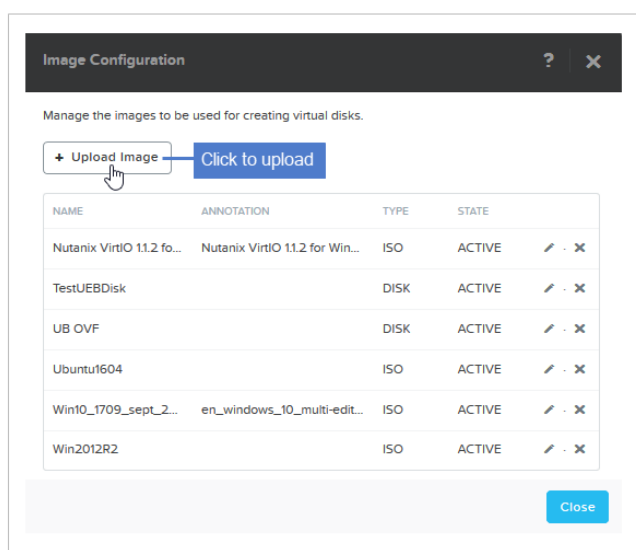
Deployment instructions remain the same whether you are setting up Unitrends Backup with new storage or with storage that contains backups from another Unitrends Backup appliance. Use the following procedure to deploy the Unitrends Backup VM.

### To deploy the Unitrends Backup VM

- 1 Save the VMDK image file to the workstation you will use to access the Nutanix Prism Web Console.
- 2 Log in to Prism as a user with administrative privileges.
- 3 Upload the Unitrends image:
  - Click the gear icon and select **Image Configuration**.



- Click **Upload Image**.



- Enter a unique name for the image.
- Select **Disk** in the Image Type list.
- Select a storage container that will be used to create the image.
- Select the **Upload a file** option, click **Browse** and select the Unitrends image.
- Click **Save**.

**Create Image**

NAME: Doc-UB

ANNOTATION:

IMAGE TYPE: DISK

STORAGE CONTAINER: NutanixManagementShare

IMAGE SOURCE:

From URL

Upload a file: AHV-UB-10.3.9-1.vmdk

Buttons: Back, Cancel, Save

- The hypervisor uploads the file and creates the image. Click **Close** to exit.

**Image Configuration**

Successfully created image Doc-UB.

Manage the images to be used for creating virtual disks. Image is created

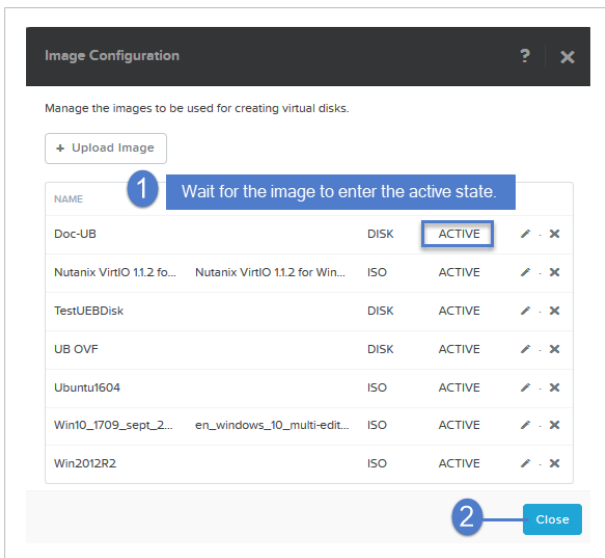
+ Upload Image

NAME	ANNOTATION	TYPE	STATE
Doc-UB		DISK	INACTIVE
Nutanix VirtIO 11.2 fo...	Nutanix VirtIO 11.2 for Win...	ISO	ACTIVE
TestUEBDisk		DISK	ACTIVE
UB OVF		DISK	ACTIVE
Ubuntu1604		ISO	ACTIVE
Win10_1709_sept_2...	en_windows_10_multi-edit...	ISO	ACTIVE
Win2012R2		ISO	ACTIVE

Buttons: Click to exit, Close

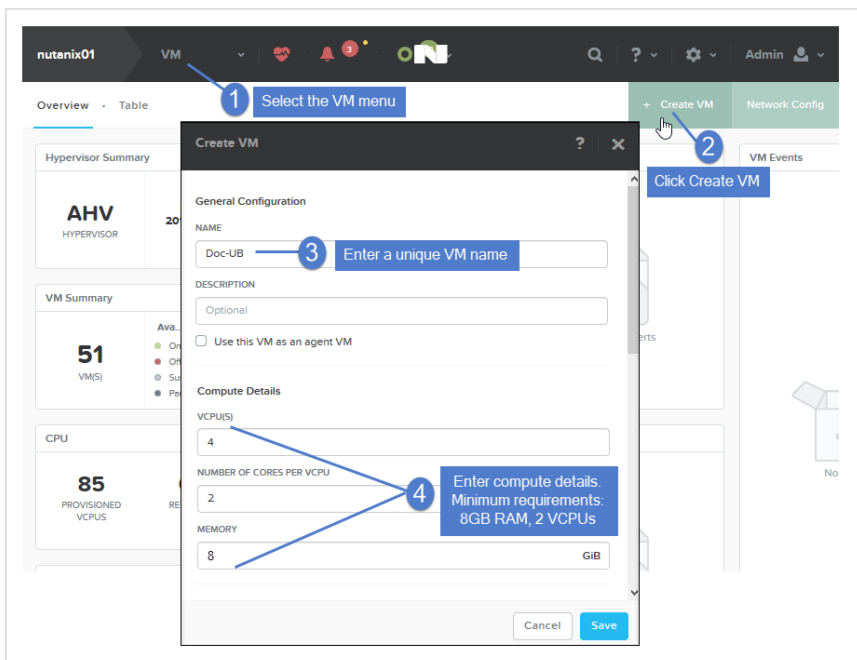
- After the image is created, it takes some time to become active. Re-open the Image Configuration dialog and verify that the image has entered the active state before continuing to the next step.





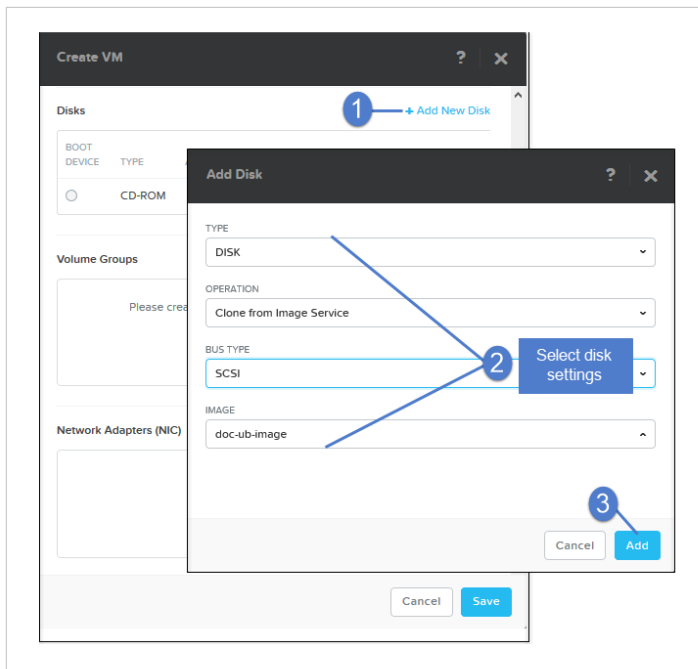
5 Create the Unitrends Backup VM:

- Select the VM menu and click **Create VM**.
- Enter a unique Name for the VM.
- Enter Compute Details.

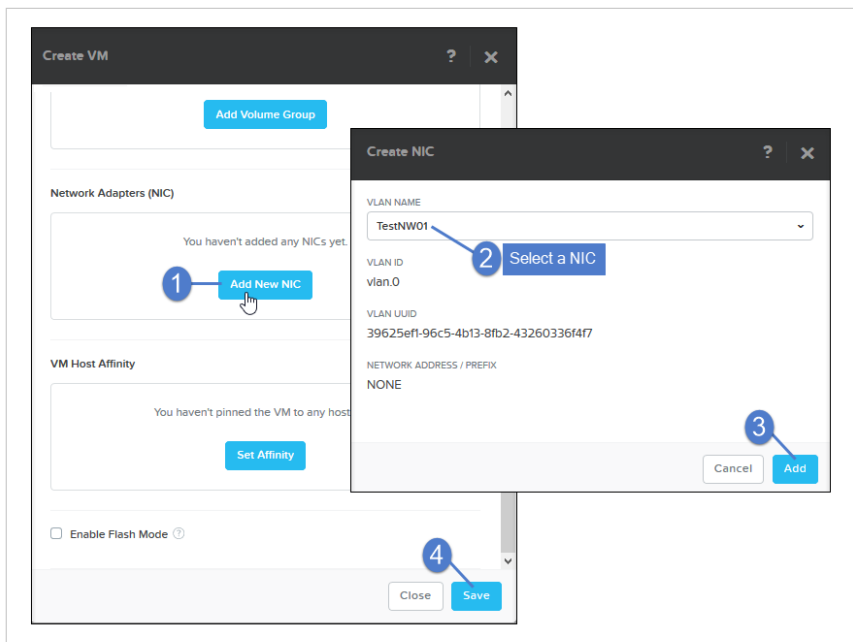


- Scroll down and select **Add New Disk**.

- Select the following settings, then click **Add**:
  - **Disk** in the Type list.
  - **Clone from Image Service** in the Operation list.
  - **SCSI** in the Bus Type list.
  - The Unitrends image you created above in the Image list.



- Configure a NIC:
  - Scroll down and click **Add New NIC**.
  - Select a NIC from the VLAN Name list, then click **Add**.
- Click **Save** to create the VM.



## Step 4: Add a virtual disk to use as the initial backup storage

Use one of the following procedures to add a virtual disk to the Unitrends Backup VM. This can be a new disk or a disk that contains backups from another AHV Unitrends Backup appliance.

- "To add a new vDisk"

OR

- "To add a vDisk that contains backups from another AHV appliance" on page 21

### To add a new vDisk

Use this procedure to use a new vDisk as the initial backup storage.

- 1 Select the VM and click **Update**.

The screenshot shows the Nutanix AHV VM console interface. At the top, there's a navigation bar with 'nutanix01', 'VM', and various status icons. Below that, a search bar and a table of VMs are visible. The table has columns for VM NAME, HOST, IP ADDRESSES, CORES, MEMORY CAPACITY, STORAGE, CPU USAGE, CONTROLLER READ IOPS, CONTROLLER WRITE IOPS, CONTROLLER IO BANDWIDTH, CONTROLLER AVG IO LATENCY, BACKUP..., and FLASH MODE. The 'Doc-UB' VM is highlighted in blue. A blue circle with the number '1' points to the 'Doc-UB' row. Below the table, there's a row of actions: Summary, Doc-UB, Manage Guest Tools, Launch Console, Power on, Take Snapshot, Migrate, Pause, Clone, Update, and Delete. A blue circle with the number '2' points to the 'Update' button.

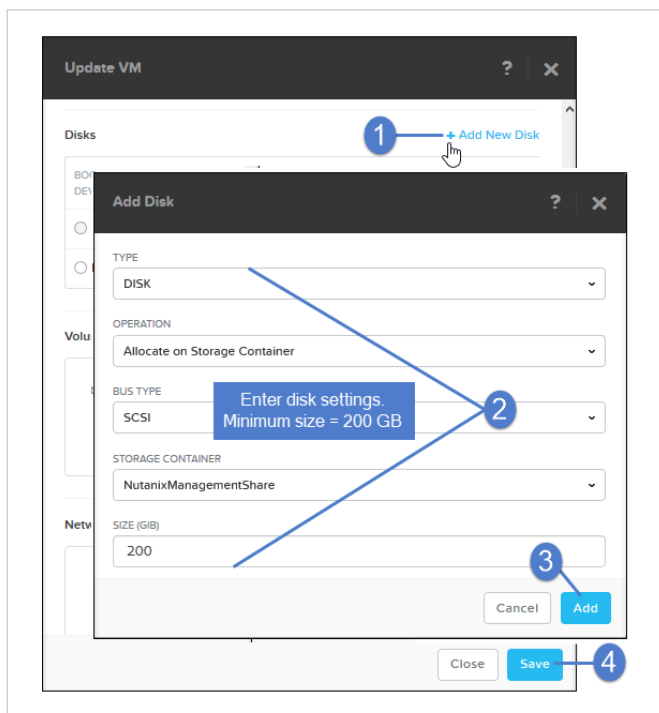
VM NAME	HOST	IP ADDRESSES	CORES	MEMORY CAPACITY	STORAGE	CPU USAGE	CONTROLLER READ IOPS	CONTROLLER WRITE IOPS	CONTROLLER IO BANDWIDTH	CONTROLLER AVG IO LATENCY	BACKUP...	FLASH MODE
.QA - Mark - Windows VM for SLA Testing	NTNX-17SM6 D120075-B	169.25...	1	2 GiB	8.96 GiB / 80 GiB	1.98%	0	0	8 KBps	6 ms	Yes	No
.QA - Mark - Windows VM w/ multiple NICs	NTNX-17SM6 D120075-B	169.25...	1	2 GiB	8.84 GiB / 80 GiB	6.45%	0	0	8 KBps	2.51 ms	Yes	No
Doc-UB			4	8 GiB	4.23 GiB / 100 GiB	0%	-	-	-	-	Yes	No
doc-ubuntu	NTNX-17SM6		1	2 GiB	3.82 GiB / 23	62.75	0	1	8 KBps	3.27 ms	Yes	No

2 Scroll down and click **Add a New Disk**.

3 Enter these disk settings, then click **Add**:

- Select **Disk** from the Type list.
- Select **Allocate on Storage Container** from the Operation list.
- Select **SCSI** from the Bus Type list.
- Select the Storage Container.
- Enter a Size (200GB minimum).

4 Click **Save** to update the VM.



5 Do one of the following:

- If the VM's NIC has DHCP available, proceed to ["Step 5: Set up the appliance using the Quick Setup Wizard" on page 31.](#)
- If DHCP is not available or if you prefer to assign a static IP address, proceed to ["To set up the appliance with a static IP address" on page 25.](#)

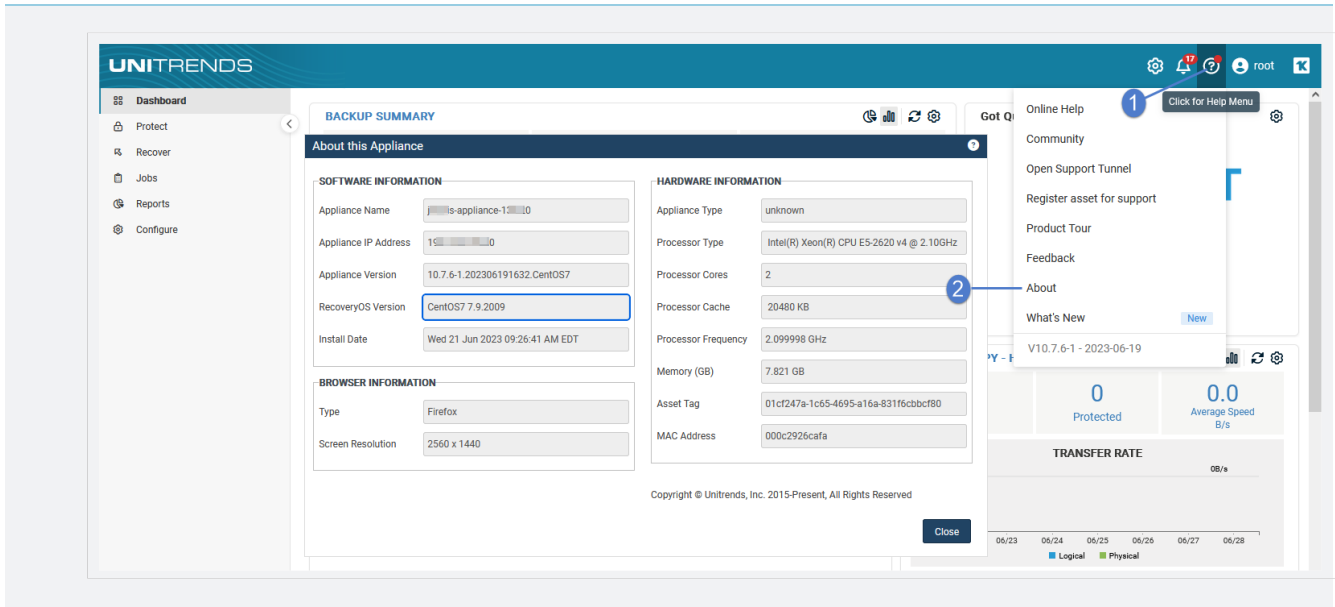
**Note:** If you will be using the appliance as a hot backup copy target, you must assign a static IP address. Use the procedure ["To set up the appliance with a static IP address" on page 25.](#)

## To add a vDisk that contains backups from another AHV appliance

Use this procedure to use a vDisk that contains backups from a different appliance as the initial backup storage.

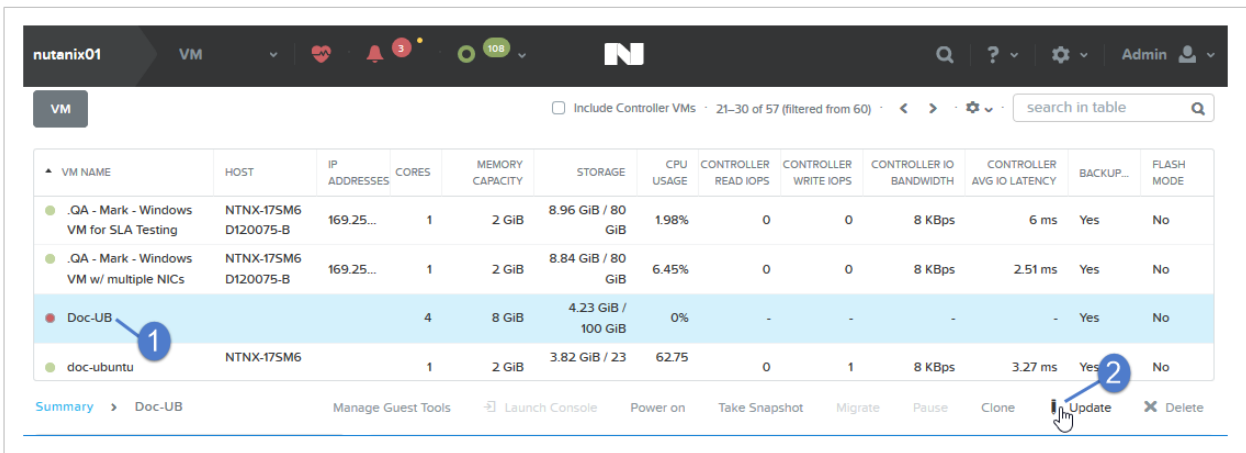
### IMPORTANT!

Attaching backup storage that contains backups from another Unitrends Backup appliance is supported only if the original appliance is running the same operating system as the newly deployed appliance. Appliances deployed with version 10.3.6 or higher run CentOS 7. Appliances deployed with older versions run CentOS 6. To check the appliance Recovery OS version, click on ? > **About**:



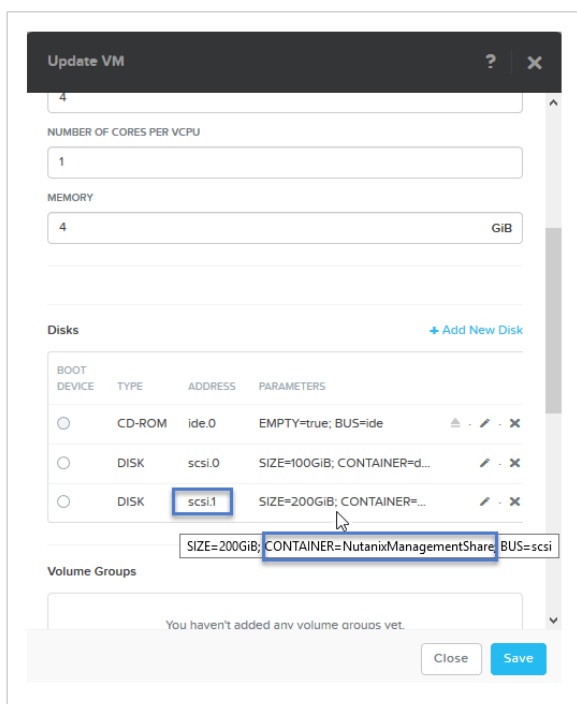
1 View the disks on the original AHV appliance to determine the SCSI ID of the vDisk you want to use:

- Log in to Prism as a user with administrative privileges.
- Select the original appliance VM ( the appliance with the vDisk that contains Unitrends backups) and click **Update**.



- Scroll down to view VM disks. Find the container name and SCSI ID of the initial backup storage disk (typically *scsi.1*).
  - Do not add the 100GB disk. The 100GB disk was used to create the appliance VM. This disk does not store Unitrends backups.
  - The next disk that was added is the backup storage disk that you will add to the new appliance.

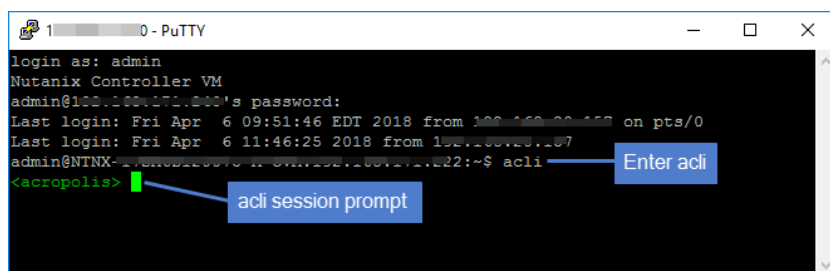
- Hover over the disk to view the container name. Note this name and the disk size. You will need these later in this procedure.



- 2 Log in to any Controller VM of the Nutanix AHV cluster through an SSH session.
- 3 Enter this command to start an AHV CLI session:

```
# acli
```

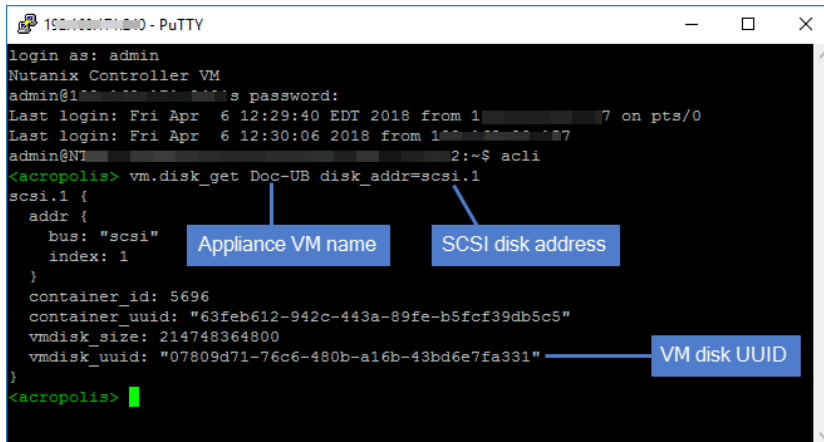
Example:



- 4 Enter the following command to find the vmdisk\_uuid of the vDisk you identified in step 1. Note the vmdisk\_uuid. You will need to supply this ID later in this procedure.

```
<acropolis> vm.disk_get <vm_name> disk_addr=scsi.<number>
```

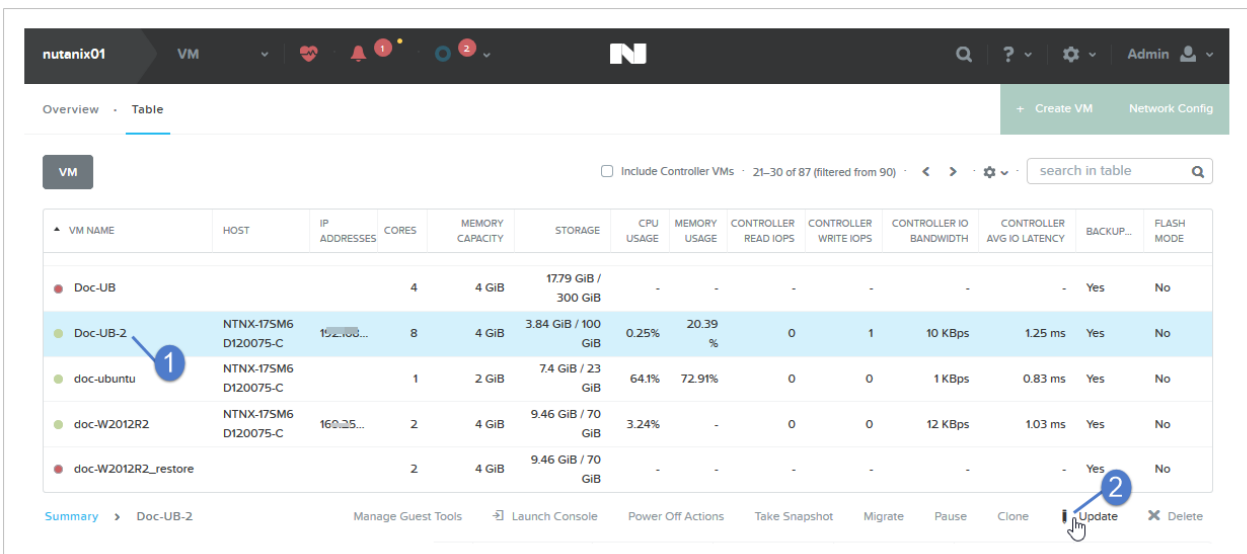
Example:



```

login as: admin
Nutanix Controller VM
admin@192.168.1.100's password:
Last login: Fri Apr  6 12:29:40 EDT 2018 from 192.168.1.100 on pts/0
Last login: Fri Apr  6 12:30:06 2018 from 192.168.1.100 on pts/0
admin@NTNX-175M6-D120075-C:~$ acli
<acropolis> vm.disk_get Doc-UB disk_addr=scsi.1
scsi.1 {
  addr {
    bus: "scsi"
    index: 1
  }
  container_id: 5696
  container_uuid: "63feb612-942c-443a-89fe-b5fcf39db5c5"
  vmdisk_size: 214748364800
  vmdisk_uuid: "07809d71-76c6-480b-a16b-43bd6e7fa331"
}
<acropolis>
  
```

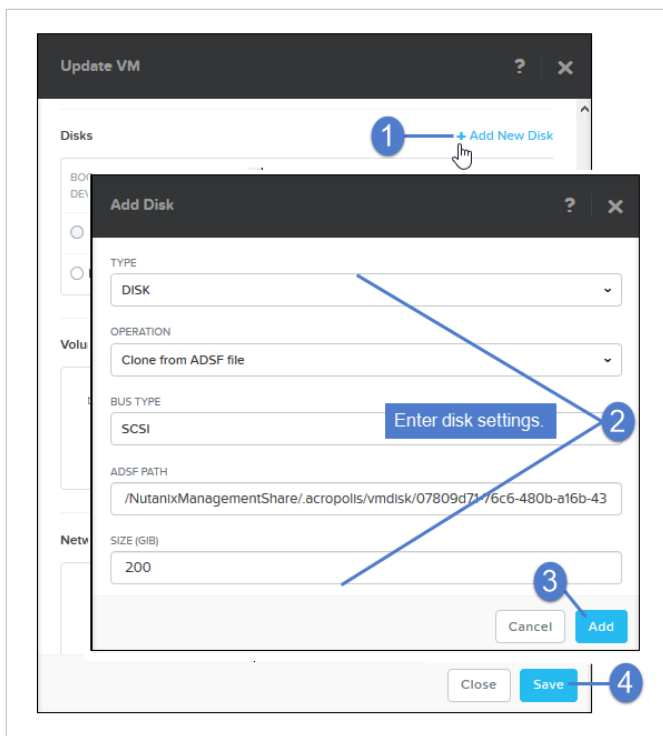
- 5 Return to the Prism Web Console.
- 6 Select the new appliance VM (that you deployed in "Step 3: Deploy the Unitrends Backup VM") and click **Update**.



VM NAME	HOST	IP ADDRESSES	CORES	MEMORY CAPACITY	STORAGE	CPU USAGE	MEMORY USAGE	CONTROLLER READ IOPS	CONTROLLER WRITE IOPS	CONTROLLER IO BANDWIDTH	CONTROLLER AVG IO LATENCY	BACKUP...	FLASH MODE
Doc-UB			4	4 GiB	17.79 GiB / 300 GiB	-	-	-	-	-	-	Yes	No
Doc-UB-2	NTNX-175M6-D120075-C	192.168...	8	4 GiB	3.84 GiB / 100 GiB	0.25%	20.39%	0	1	10 KBps	1.25 ms	Yes	No
doc-ubuntu	NTNX-175M6-D120075-C		1	2 GiB	7.4 GiB / 23 GiB	64.1%	72.91%	0	0	1 KBps	0.83 ms	Yes	No
doc-W2012R2	NTNX-175M6-D120075-C	160.25...	2	4 GiB	9.46 GiB / 70 GiB	3.24%	-	0	0	12 KBps	1.03 ms	Yes	No
doc-W2012R2_restore			2	4 GiB	9.46 GiB / 70 GiB	-	-	-	-	-	-	Yes	No

- 7 Scroll down and click **Add New Disk**.
- 8 Enter these disk settings, then click **Add**:
  - Select **Disk** from the Type list.
  - Select **Clone from ADSF File** from the Operation list.
  - Select **SCSI** from the Bus Type list.
  - Enter the following in the ADSF Path field: /<containerName>/acropolis/vmdisk/<vmdisk\_uuid>
  - Enter the disk size.
- 9 Click **Save** to update the VM.





**10** Do one of the following:

- If the VM's NIC has DHCP available, proceed to ["Step 5: Set up the appliance using the Quick Setup Wizard" on page 31.](#)
- If DHCP is not available or if you prefer to assign a static IP address, proceed to ["To set up the appliance with a static IP address" on page 25.](#)

**Note:** If you will be using the appliance as a hot backup copy target, you must assign a static IP address. Use the procedure ["To set up the appliance with a static IP address"](#).

**To set up the appliance with a static IP address**

**Note:** If you are deploying using storage from another AHV Unitrends Backup appliance that contains backup data, you can enter the same network settings as the original appliance or use different network settings. If using the same network settings, be sure the original VM is powered off.

- 1 From the Prism VM menu, select the appliance VM and click **Power On**.

Overview · Table

VM

Include Controller VMs · 21-30 of 57 (filtered from 60) · search in table

VM NAME	HOST	IP ADDRESSES	CORES	MEMORY CAPACITY	STORAGE	CPU USAGE	CONTROLLER READ IOPS	CONTROLLER WRITE IOPS	CONTROLLER IO BANDWIDTH	CONTROLLER AVG IO LATENCY	BACKUP...	FLASH MODE
.QA - Mark - Windows VM for SLA Testing	NTNX-175M6 D120075-B	169.25...	1	2 GiB	8.96 GiB / 80 GiB	6.6%	0	1	16 KBps	13.03 ms	Yes	No
.QA - Mark - Windows VM w/ multiple NICs	NTNX-175M6 D120075-B	169.25...	1	2 GiB	8.84 GiB / 80 GiB	2.31%	0	0	8 KBps	4.84 ms	Yes	No
Doc-UB	NTNX-175M6 D120075-B		4	8 GiB	4.23 GiB / 300 GiB	0%	-	-	-	-	Yes	No
doc-ubuntu	NTNX-175M6 D120075-B		1	2 GiB	3.82 GiB / 23 GiB	73.87 %	0	0	3 KBps	12.9 ms	Yes	No

Summary > Doc-UB

Manage Guest Tools Launch Console Power on Take Snapshot Migrate Pause Clone Update Delete

## 2 Launch the VM Console.

Overview · Table

VM

Include Controller VMs · 21-30 of 57 (filtered from 60) · search in table

VM NAME	HOST	IP ADDRESSES	CORES	MEMORY CAPACITY	STORAGE	CPU USAGE	CONTROLLER READ IOPS	CONTROLLER WRITE IOPS	CONTROLLER IO BANDWIDTH	CONTROLLER AVG IO LATENCY	BACKUP...	FLASH MODE
.QA - Mark - Windows VM for SLA Testing	NTNX-175M6 D120075-B	169.25...	1	2 GiB	8.96 GiB / 80 GiB	1.97%	0	0	3 KBps	20.24 ms	Yes	No
.QA - Mark - Windows VM w/ multiple NICs	NTNX-175M6 D120075-B	169.25...	1	2 GiB	8.84 GiB / 80 GiB	3.77%	0	0	11 KBps	17.86 ms	Yes	No
Doc-UB	NTNX-175M6 D120075-A		4	8 GiB	- / 300 GiB	9.36%	0	0	0 KBps	0 ms	Yes	No

Summary > Doc-UB

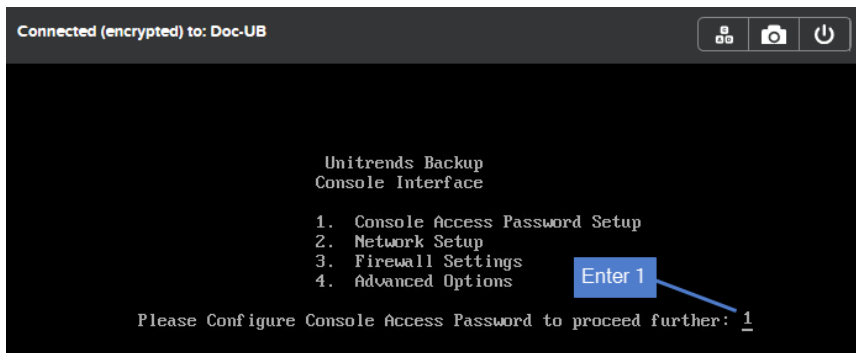
Manage Guest Tools Launch Console Power Off Actions Take Snapshot Migrate Pause Clone Update Delete

The remaining steps are run from the Unitrends Backup console interface. On these screens, you select a menu option by entering a number in the **Please enter choice** field.

### Notes:

- As you complete each step in the Unitrends Backup Console Interface, you are presented with the next configuration screen.
- You can press **Enter** to accept the default or current setting.

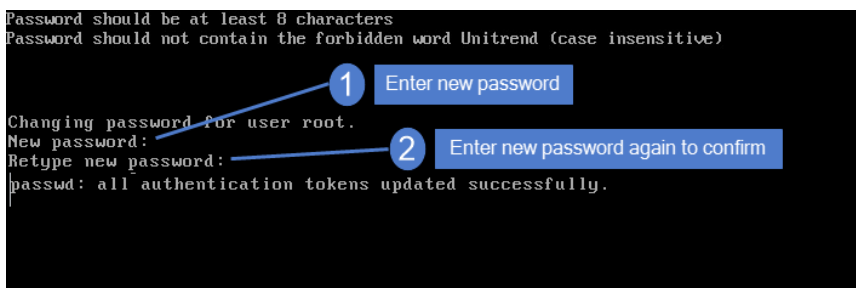
## 3 On the Console Interface screen, enter **1** in the **Please Configure Console Access Password...** field.



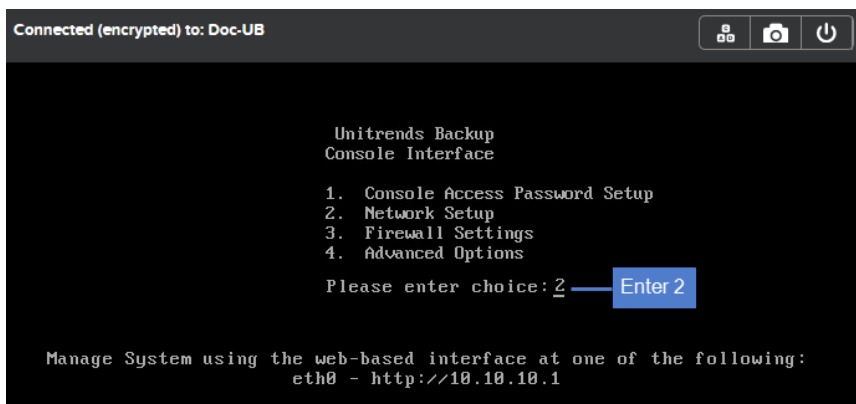
- 4 To change the direct console password, enter a new password, then enter the password again to confirm.

**Notes:**

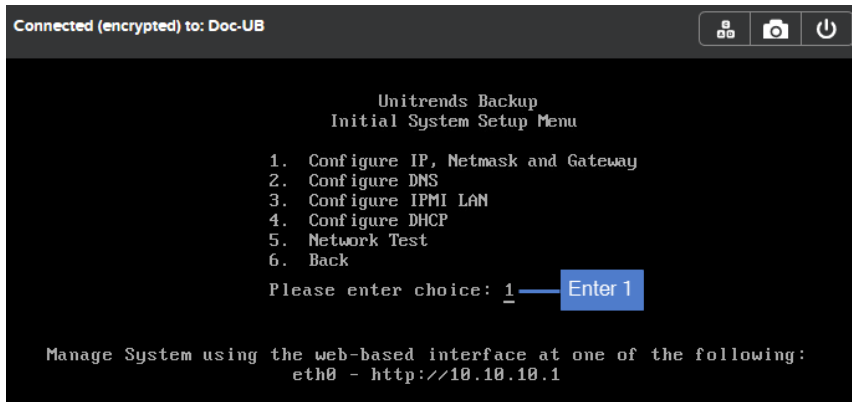
- This is the root operating system password that accesses the console. This password does not access the UI. (You will change the UI password in "Step 5: Set up the appliance using the Quick Setup Wizard" on page 31.)
- All appliances are deployed with these default operating systems credentials: user *root*, password *unitrends1*. For appliance security, you must change this password.



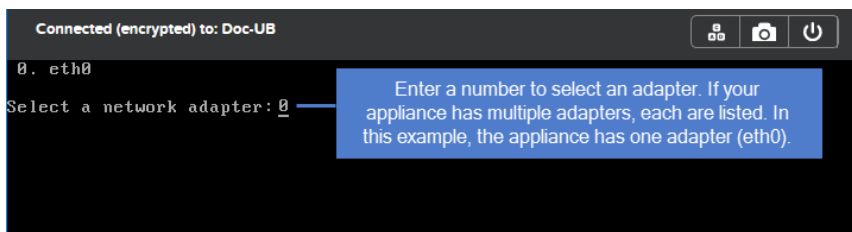
- 5 On the Console Interface screen, enter **2** in the **Please enter choice** field.



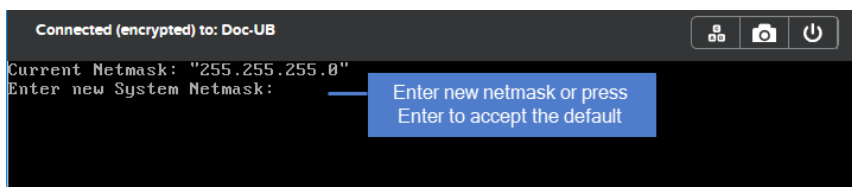
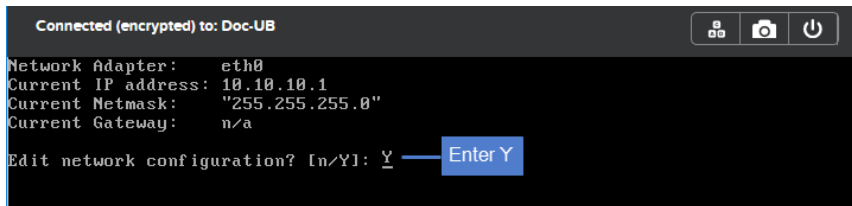
- 6 On the Initial System Setup Menu screen, enter **1** in the **Please enter choice** field.

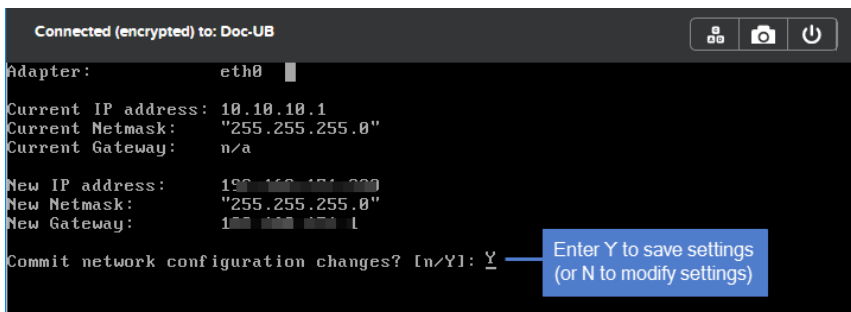


- 7 Enter a number in the **Select a network adapter** field. For example, enter **0** to select *eth0*.

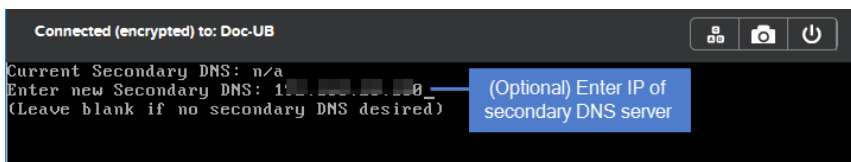
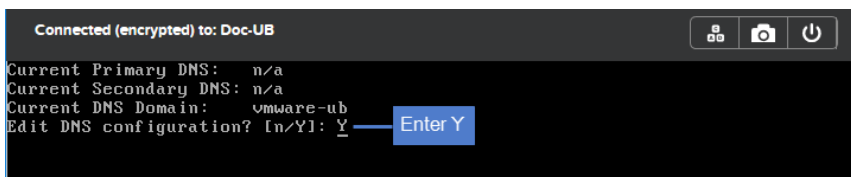
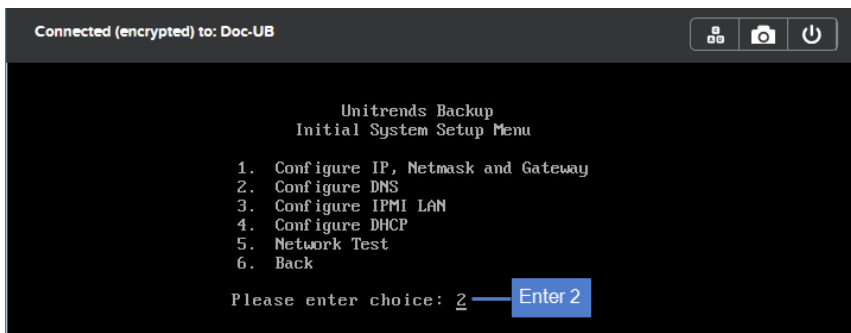


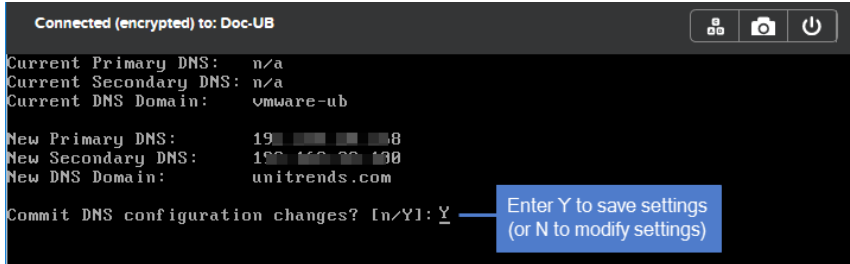
- 8 Enter **Y** in the **Edit network configuration** field. Then enter an **IP address**, **Netmask**, and **Gateway**. Review the settings and enter **Y** to save.



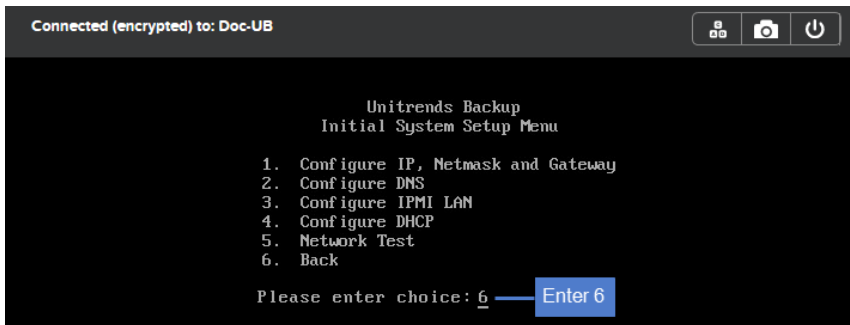


- 9 To configure DNS settings, enter 2, then enter Y to edit. Enter the primary DNS IP address, a secondary DNS IP (optional), and a DNS domain. Review the settings and enter Y to save.

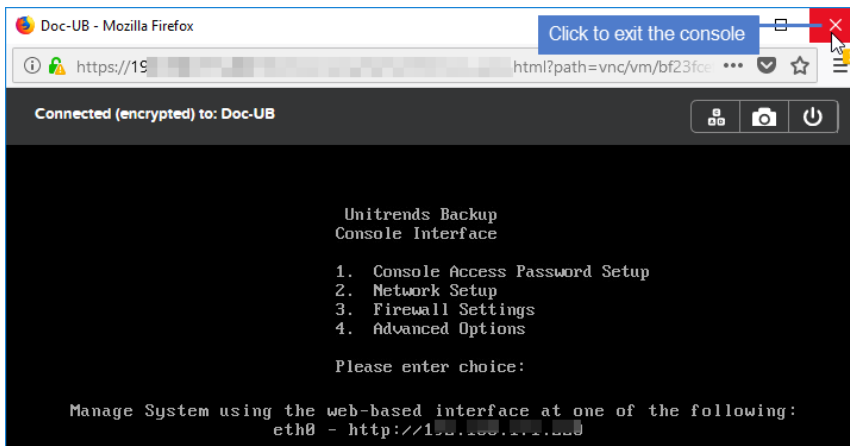




- 10 To exit network setup, enter 6.



- 11 Exit the VM console.



- 12 Proceed to "Step 5: Set up the appliance using the Quick Setup Wizard".

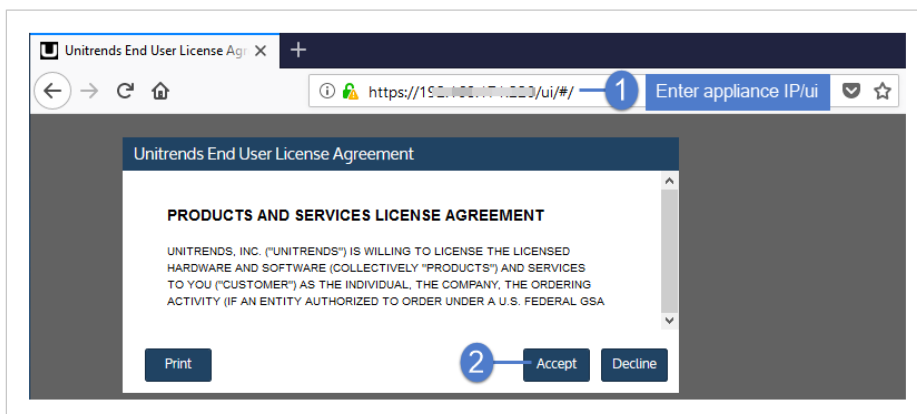
## Step 5: Set up the appliance using the Quick Setup Wizard

To start the setup process, log in to the appliance UI from any machine on the same network by opening a browser and entering the appliance's IP address followed by `/ui/`. The Quick Setup Wizard launches when you access the UI for the first time.

### To set up the appliance

Use this procedure to set up the appliance:

- 1 Open a browser and connect to your appliance by entering: `https://<applianceIP>/ui`. For example: `https://10.10.10.1/ui`.
- 2 Click **Accept** to accept the license agreement.



- 3 Set the appliance date and time by doing one of the following, then click **Next**:

- Select a **Timezone**. If needed, modify the appliance **Date** and **Time**.

OR

- Check the **Use an NTP Server** box to sync to an NTP server. (Optional) Enter your preferred NTP server address.

- 4 Enter a **Host Name**, a **Domain**, and a new **UI Password** for the appliance. If needed, enter a new **OS Password**. Confirm the passwords by entering them again in the fields to the right. Click **Next**.

#### Notes:

- The hostname can contain only alphanumeric characters, dashes, and underscores.
- The appliance has a UI root user and an OS root user. These are separate accounts. Changing the password of one root user account does NOT change the password of the other root user account. The UI root user is used to log in to the appliance UI. The OS root user is used to log in to the appliance console or for command line access.
- If you have already set the OS password, these fields are disabled in the Quick Setup Wizard.
- Passwords cannot contain the word *Unitrend* (case insensitive).
- The OS password must contain 8 or more characters.
- All appliances are deployed with these default UI and OS credentials: user *root*, password *unitrends1*. For appliance security, you must change these passwords in the Quick Setup Wizard. For increased security, ensure that the OS password you enter is different than the UI user password.
- After you finish the deployment procedures in this guide, you can set up additional UI users for the appliance at any time. For details, see *Users and roles* in the [Administrator Guide for Recovery Series, Recovery MAX, ION/ION+, and Unitrends Backup, Appliance settings](#) topic.



- 5 (Optional) To enable email from the appliance, check **Enable email reporting** and enter the following:
  - The fully qualified domain name of the **SMTP server**.
  - (If needed) If the SMTP server requires authentication, select **Authentication required** and enter a **Username** and **Password**.
  - Click **+ Add Recipients** to add an email recipient. Enter an email address in the **Recipient** field and select one or more of the **System**, **Jobs**, and **Failures** options to specify which reports the appliance will send to the recipient. Repeat as needed to add more recipients.
- 6 Click **Finish**.

**UNITRENDS**

Date & Time | Host Name & Password | **Email**

1  Enable email reporting

SMTP Server: unitrends.com 2 Enter the FQDN of the SMTP server

Authentication Required

Username: \_\_\_\_\_ 3 If the SMTP server uses authentication, check the box and enter credentials

Password: \_\_\_\_\_

Confirm Password: \_\_\_\_\_

Recipients	System	Jobs	Failures
jalvarez@unitrends.com	<input checked="" type="checkbox"/>	<input checked="" type="checkbox"/>	<input checked="" type="checkbox"/>
djones@unitrends.com	<input type="checkbox"/>	<input checked="" type="checkbox"/>	<input checked="" type="checkbox"/>

5 For each recipient, enter an email address and select reports to send

4 + Add Recipients  
Click to add an email recipient

6 Previous Finish

## 7 Do one of the following:

- If you deployed by using new storage for the initial backup storage, the Welcome to Unitrends dialog displays. Click **Start exploring** to view the interactive product tour. Then proceed to "[Step 6: \(Optional\) Modify deduplication settings](#)".

**UNITRENDS**

Dashboard

- Protect
- Recover
- Jobs
- Reports
- Configure

**Backup Summary**

0 Errors | 16 Not Protected | 0 Protected

AVG BACKUP SPEED 0 B/s | TOTAL SIZE 0 B | AVG SPEED 0 B/s

**UNITRENDS**

Hi there!  
Welcome to Unitrends

For our new admins and those looking to familiarize themselves with Unitrends administration, we have curated a new experience.

Start exploring | Click here to begin the tour

**Storage**

Type	Name	Appliance
Internal	walkme-u	

**Active Jobs**

Job Name	Appliance	Asset	Progress	Status	Duration
There are no active jobs					

**Backup Copy - Hot Targets**

0 Errors | 0 Protected | 0.0 Average Speed B/s

TRANSFER RATE 0 B/s

08/07 08/08 08/09 08/10 08/11 08/12 08/13

Logical Physical

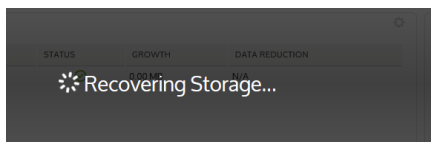
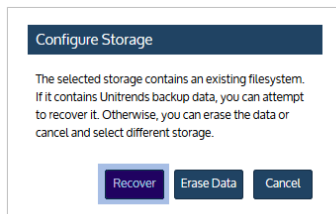
Got Questions? Ask the Community

**ConnectIT COMMUNITY**

Login Register Suggest Ideas

OR

- If you deployed by using storage that contains backups from another Unitrends Backup appliance, click **Recover** to add the backups to the appliance. Then proceed to "[Step 6: \(Optional\) Modify deduplication settings](#)".

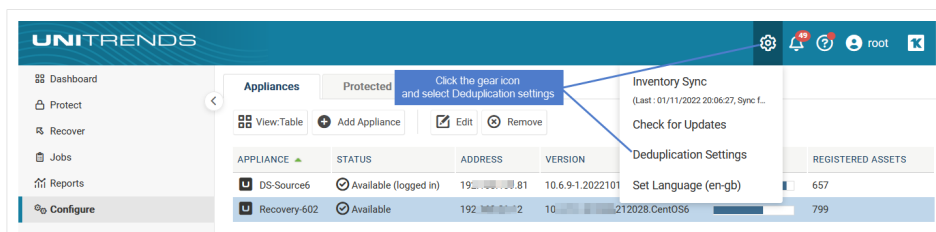


## Step 6: (Optional) Modify deduplication settings

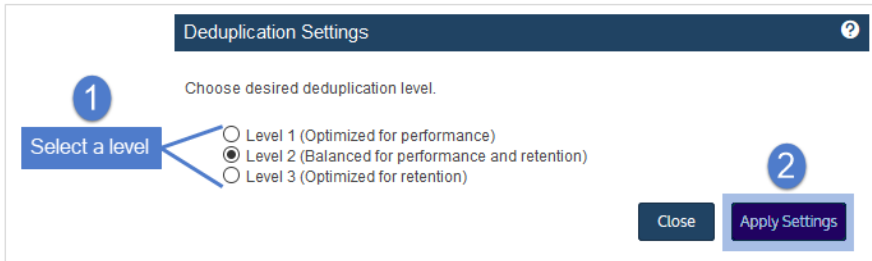
Deduplication is a data compression technique that eliminates duplicate data blocks. To yield fastest performance, the appliance is configured to use the Level 1 deduplication setting. You can opt to modify this setting to increase on-appliance retention. Keep in mind that increasing the deduplication level decreases job speed.

### To modify the deduplication level

- 1 From the Global options at the top of the UI, select **Options > Deduplication Settings**.



- 2 Select one of the following deduplication settings:
  - Level 1 — Use this setting to optimize performance.
  - Level 2 — Use this setting to balance performance and on-appliance retention.
  - Level 3 — Use this setting to optimize retention.
- 3 Click **Apply Settings**.



- Proceed to "Step 7: Register and license the Unitrends Backup appliance".

## Step 7: Register and license the Unitrends Backup appliance

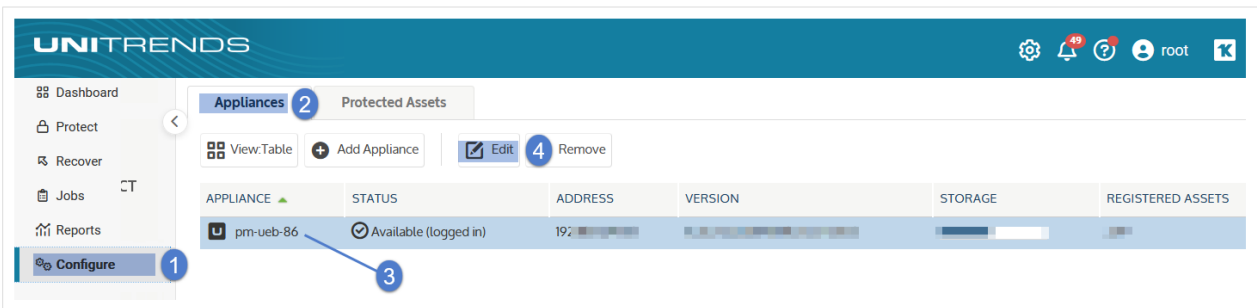
Your appliance is now configured and you can begin using it to protect your environment. For details, see the [Administrator Guide for Recovery Series, Recovery MAX, ION/ION+, and Unitrends Backup](#).

You must register and license the appliance within 30 days of deploying Unitrends Backup.

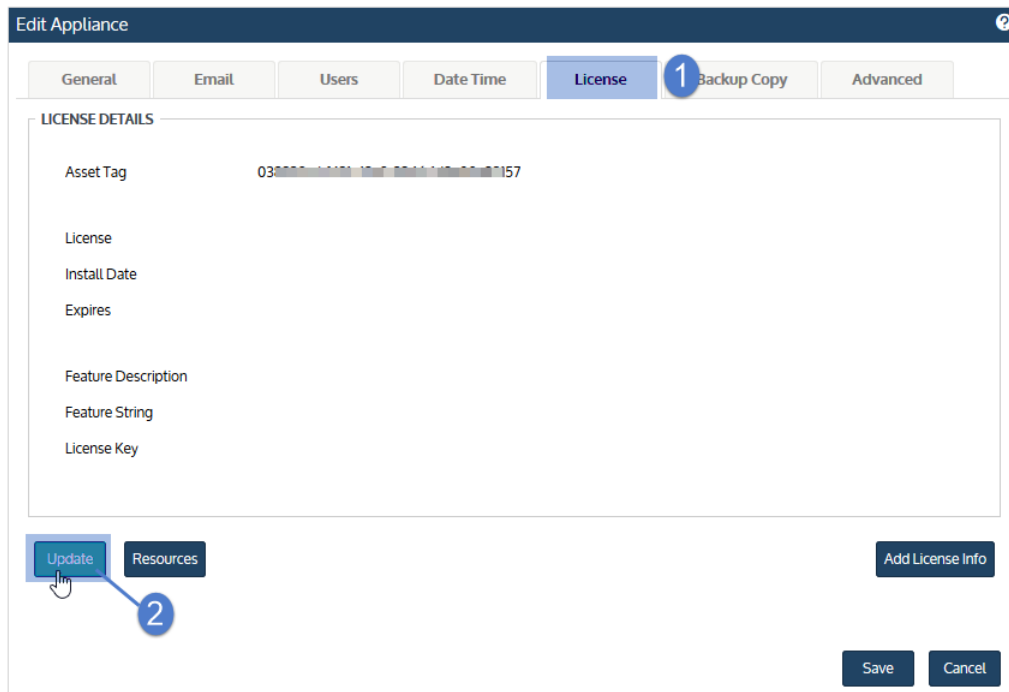
Each appliance requires an activation code and license key. Use the procedures below to register and license the appliance:

### To register a Unitrends Backup appliance

- On the **Configure > Appliances** page, select the appliance and click **Edit**.

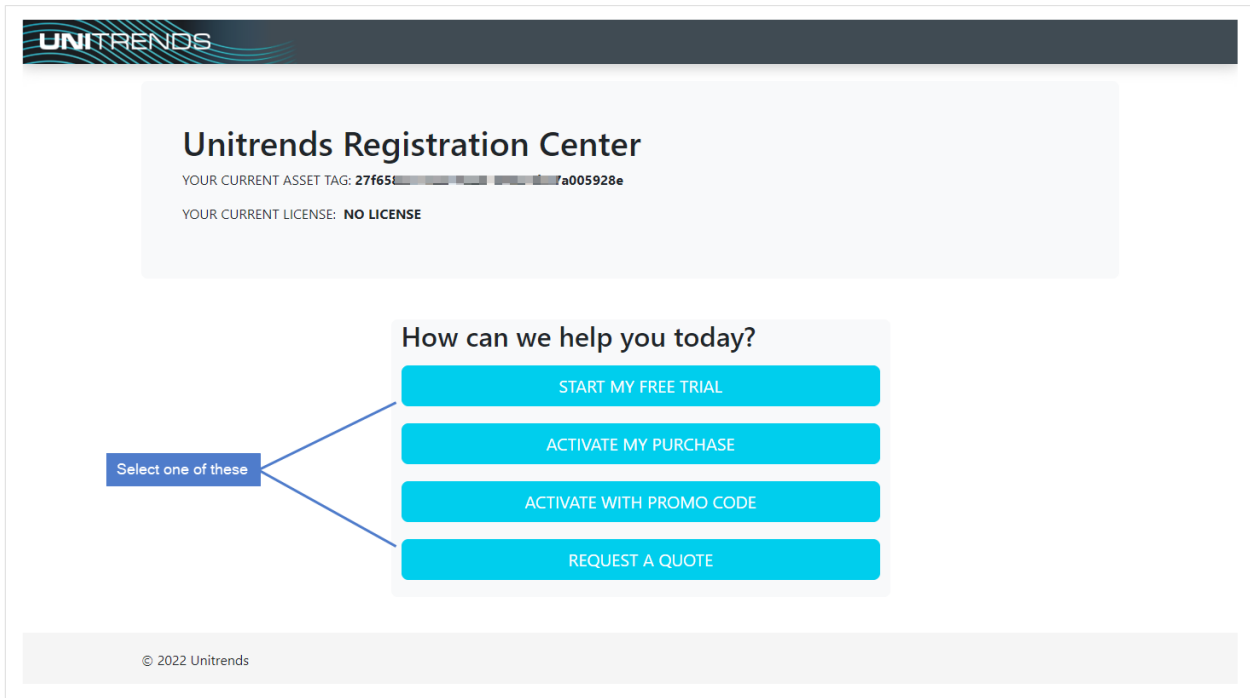


- Select the **License** tab and click **Update**. The Registration Center displays.



3 Select one of the following:

Selection	Description
Start my free trial	Submit this form to start your free 30-day trial.
Activate my purchase	Enter your email address and activation code. Your license key will be emailed to the address you enter here.
Activate with promo code	Enter your promotional code to register your product and receive your license key.
Request a quote	Request a license quote.



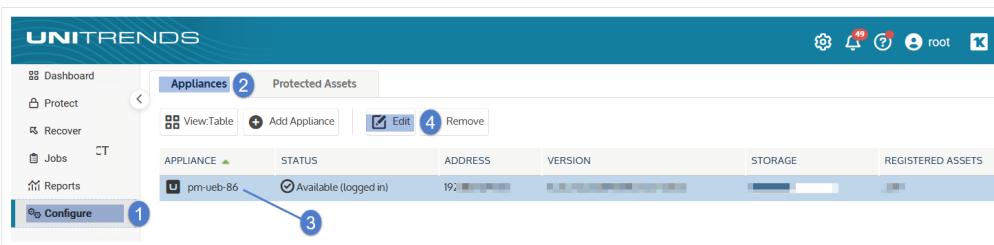
#### 4 Complete and submit the applicable form.

Once you have purchased a license, Unitrends sends an email containing license details. Use the next procedure to apply this license information to the appliance.

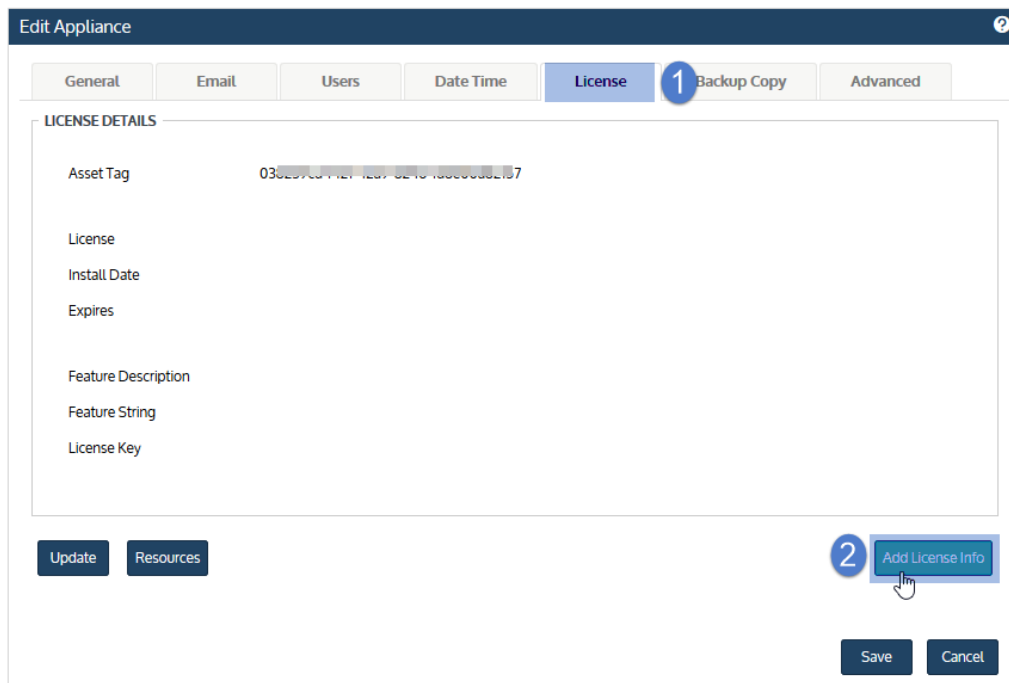
### To license a Unitrends Backup appliance

Use these steps to enter license information you have received from Unitrends.

#### 1 On the **Configure > Appliances** page, select the appliance and click **Edit**.

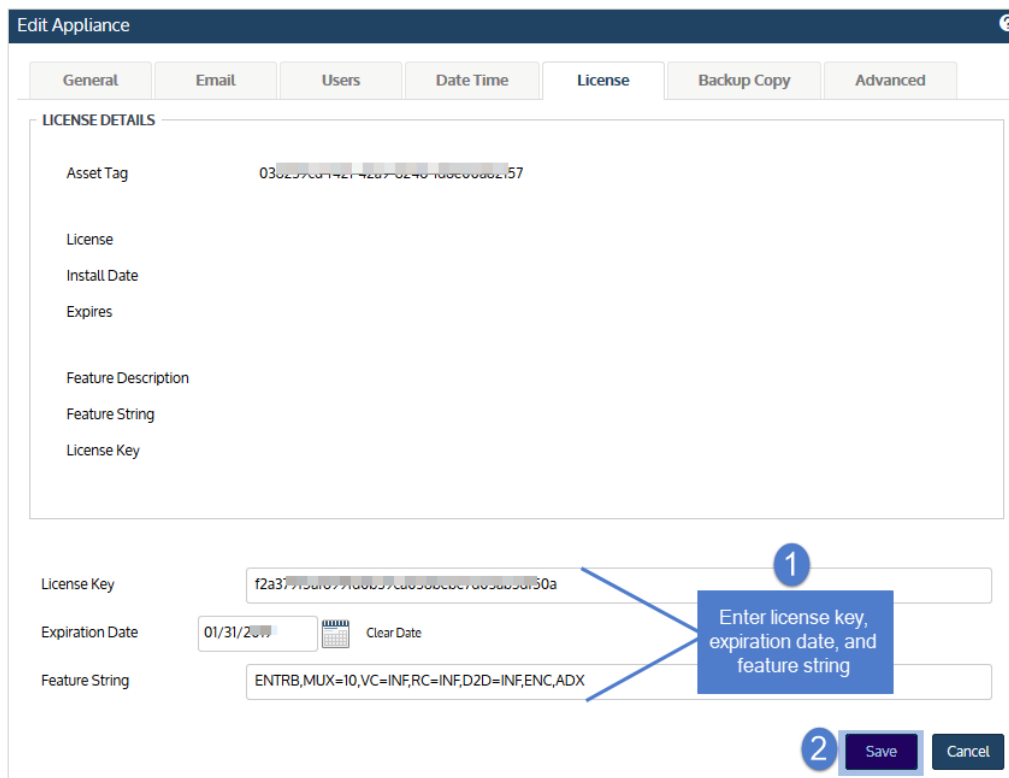


#### 2 Select the **License** tab and click **Add License Info**.



3 Enter the License Key, Expiration Date, and Feature String.

4 Click **Save**. The license is applied.



**Edit Appliance**

General | Email | Users | Date Time | **License** | Backup Copy | Advanced

**LICENSE DETAILS**

Asset Tag	038200-00-MC1-1007-00-10-10000002157
License	Enterprise Edition
Install Date	Thu Nov 3 16:27:42 2016
Expires	01/31/2019
Feature Description	Unlimited Replication or Backups, Encryption, Archiving
Feature String	ENTRB,MUX=10,VC=INF,RC=INF,D2D=INF,ENC,ADX
License Key	f2a372f5-462140120-0321-1-74621-3df50a

Upgrade | Resources | Add License Info

Save | Cancel

License is applied and details display

## Step 8: Start protecting your environment

Deployment is complete and you can get started protecting your environment. For details, see the [Administrator Guide for Recovery Series, Recovery MAX, ION/ION+, and Unitrends Backup](#).